



PEMCO

Product Catalogue

WWW.PEMCO.IE

Progress Electroplating and Manufacturing Co.Ltd

Unit 3, Harbour Industrial Estate, Bray, Co. Wicklow, Ireland. A98 AV27

Tel: +353 1 2861266. Email: info@pemco.ie Web: www.pemco.ie



About Us

PEMCO – Progress Electroplating and Manufacturing Co. Ltd is a Manufacturing and Distribution company based in Bray Co. Wicklow, Ireland supplying the Electrical Wholesale Trade in the Republic of Ireland, Northern Ireland, and the UK.

Established in 1974 by Joseph Tynan Snr. an electrician by trade, it has now become a third-generation family run business employing over 20 people. PEMCO has grown from humble beginnings to become **Ireland's leading, manufacturer importer and distributor of electrical components.**

We stock a full range of Cable Management Systems, PVC Flush and Surface Boxes, Metal Boxes, Earth Rods and boxes, PVC Conduit and Accessories, Wiring Accessories, Lighting and much more.

All PVC boxes, Trunking and Conduits are manufactured in our 20,000sqft facility in Bray, Co. Wicklow. PEMCO is the only manufacturer of these products in Ireland. We also manufacture and assemble some of our lighting range here in Bray.

Cable Management specialists with unrivalled experience. PEMCO is Ireland's leading manufacturer of Cable Management solutions for commercial, industrial, healthcare, education and domestic markets. Proficient technical skills and excellent customer service are at the core of PEMCO's Electricals' expertise. Going further to exceed customers' expectations is part of our DNA. In 2024, PEMCO celebrate 50 years in business.

Our comprehensive stock profile, reliable delivery, competitive pricing, and knowledgeable staff are the reason our customers come back again and again.

We work closely with all our suppliers to ensure we continue to meet our customers' requirements in terms of features, benefits, and price!

Naturally, quality and Safety are top priorities, and all our products are tested to meet and exceed the toughest European Standards.

Our value proposition through an ability to advise and satisfy customers with very specific needs on typical products and solutions. Customer service at the heart of our business, we have put faith in our people and been rewarded with over five decades of consistent business growth.

As part of our Customer Service Offer, we aim to deliver your order on your next scheduled delivery day provided your order has been received by the agreed cut off time.

Sustainability

What are we doing?

PEMCO places the energy transition at the heart of its value creation strategy, confirming both its ambition and its commitment to building a sustainable future.

We are constantly looking to improve our own impact within the supply chain. Over the years, we have changed our Manufacturing processes to start using recycled material on all our oval conduits. We re-use all waste raw material.

We continue to invest in our on-site Reclamation Operation, allowing us to provide an efficient recycling infrastructure for collecting uPVC and processing it into raw material. This enables us to increase efficiency and decrease its revenue/energy costs to safeguard a greener better future. As a result, we are considered to be one of the leading environmentally friendly companies in our field.

Buying PEMCO - Irish manufactured products can help reduce your carbon footprint by shortening transportation, distances, which lowers energy use and greenhouse gas emissions.

Serving the Electrical Wholesale industry all over Ireland daily.

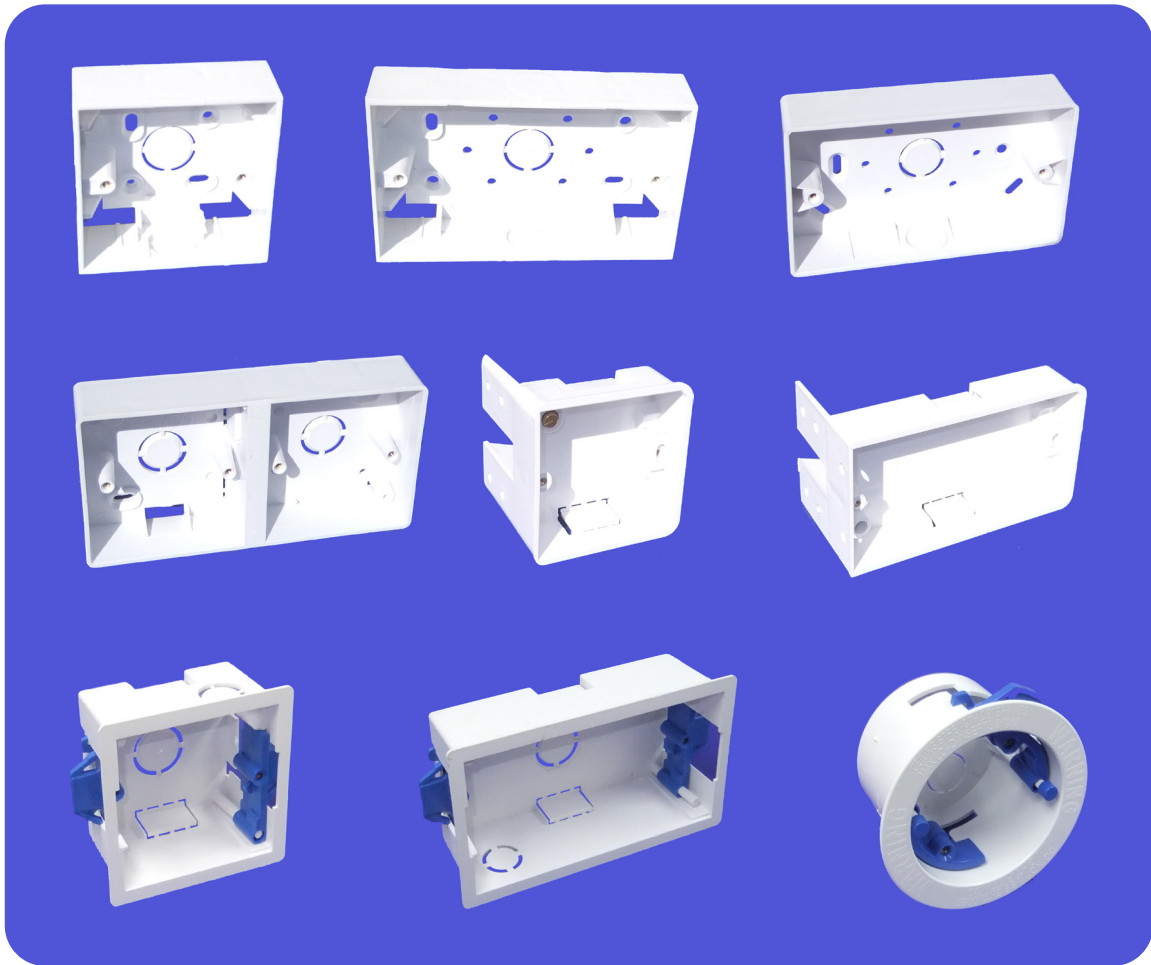


Contents

PVC Surface, Switch, Socket Boxes.....	5-9
Cable Management.....	11-21
Metal Flush, Switch & Socket Galvanised Boxes.....	23-26
Enclosures & Junction Boxes.....	28-31
Floor Boxes.....	32
Earthing.....	34
Wiring Accessories.....	35-38
Ventilation.....	39
Screws and Fixings.....	41
Steel Conduit Bending Machine.....	42
Concrete Systems.....	44
Claddagh Collection White.....	46-52
Claddagh Collection Chrome.....	54-62
Claddagh Collection Surface Metal Clad & Rotary Isolator's.....	64-66
LED Lighting.....	68-74
LED Floodlights.....	76
Notes.....	77-78
Terms and Conditions of Sale	



PVC Surface, Switch & Socket Boxes.



Switches & Socket Boxes

Our own manufactured PEMCO range of surface switch and socket boxes come in a range of different sizes and types. Ranging from 16mm up to 47mm in depth. These boxes are perfect for solid walls where a cut out can't be made or any other option where surface mounting is required. Using this range, we should have a solution for any installation.

PEMCO PVC Surface, Switch and Socket Boxes are manufactured in house in Bray with High Quality PVC. Complying with EN 60670 -1 for the appropriate tests where applicable.

MT = Mini Trunking
CW = Comes With
KO = Knock Out



PVC Flush Switch & Socket Boxes

PEMCO PVC Flush Boxes are manufactured in Bray with High Quality PVC material and Brass Moulded insert 3.5mm, each box has 1 adjustable lug and 1 fixed lug. Flush Boxes comply with EN 60670-1 for the appropriate tests. They are suitable for domestic and commercial use and are specially designed for ease of use in timber framed houses and wooden studdings. Side Fixing Boxes comply with EN 60670-1 for the appropriate tests.

PVC Flush Boxes

Product Code	Description	Size/Depth	Qty
10100	1 Gang PD PVC Flush Box Dim 75 x 75 x 16mm CW 1 x 16mm KO 1 x 20mm Oval KO	16mm	100
10101	2 Gang PD PVC Flush Box Dim 135 x 75 x 20mm CW 1 x 16mm KO 5 x 20mm Oval KO's	20mm	100
10102	1 Gang PVC Flush Box Dim 75 x 75 x 25mm CW 4 x 20mm Round KO's	25mm	100
10103	2 Gang PVC Flush Box Dim 135 x 75 x 25mm CW 5 x 20mm Round KO's	25mm	100
10104	1 Gang PVC Flush Box Dim 75 x 75 x 35mm CW 4 x 20mm Round KO's	35mm	100
10105	2 Gang PVC Flush Box Dim 135 x 75 x 35mm CW 8 x 20mm Round KO's	35mm	100
10133	Adjustable Lug		1



PVC Side Fixing Boxes

Product Code	Description	Size	Qty
10116	1 Gang Side Fixing PVC Box Dim 75 x 75 x 25 CW 2 - 25 x 16mm MT KO From rear to Front of fixing bracket 70mm	25mm	100
10117	2 Gang Side Fixing PVC Box Dim 137 x 75 x 25 CW 2 - 25mm x 16mm MT KO From rear to Front of fixing bracket 70mm	25mm	100
10133	Adjustable Lug		1





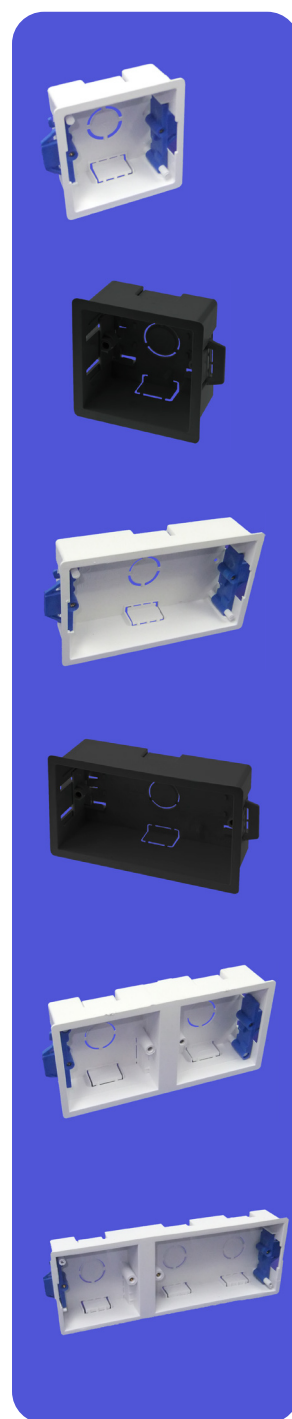
PVC Switch & Socket Boxes for Drylining walls

PEMCO PVC Drylining Boxes are manufactured in Ireland from High Quality Self Extinguishing PVC. Pemco PVC Drylining Boxes are Flush mounting suitable for use in Drylining Cavity Walls and come with Blue Adjustable lugs specially designed W for ease of clamping. Boxes include wide flange around the outer rim and can easily cope with irregular shaped openings. Intumescent fire barrier pads and acoustic Pads are now available for W PVC Drylining Boxes.

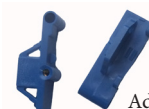
PEMCO PVC Drylining Boxes are Tested in Accordance with EN 60670-1 EN 60695-2-1.

PVC Dry-lining Boxes

Product Code	Description	Size	Qty
10106	1 Gang Dry Lining Box Inner Dim 74 x 74 x 35mm CW 1 x 25mm round KO 2 - 25 x 16mm MT KO's	35mm	20-Tray 100-Box
10106 BLK	1 Gang Dry Lining Box Black Inner Dim 74 x 74 x 35mm CW 1 x 25mm round KO 2 - 25 x 16mm MT KO's	35mm	20-Tray 100-Box
10107	2 Gang Dry Lining Box Inner Dim 134 x 74 x 35mm CW 1 x 25mm round KO 2 - 25 x 16mm MT KO's	35mm	10-Tray 100-Box
10107 BLK	2 Gang Dry Lining Box Black Inner Dim 134 x 74 x 35mm CW 1 x 25mm round KO 2 - 25 x 16mm MT KO's	35mm	10-Tray 100-Box
10108	Dual Dry Lining Box Inner Dim 162 x 74 x 35mm CW 2 x 25mm round KO's 4 - 25 x 16mm MT KO's	35mm	10-Tray 50-Box
10129	2+1 Gang Dry Lining Box Inner Dim 220 x 82 x 35mm CW 3 x 25mm round KO's 8 - 25 x 16mm MT KO's	35mm	10-Tray 100-Box
10134	Adjustable Blue Lug		1



◀ 3.5mm Brass Inserts



Adjustable Blue Lug



PVC Switch & Socket Boxes for Drylining walls

PEMCO PVC Drylining Boxes are manufactured in Ireland from High Quality Self Extinguishing PVC. PEMCO PVC Drylining Boxes are Flush mounting suitable for use in Drylining Cavity Walls and come with Blue Adjustable lugs specially designed for ease of clamping. Boxes include wide flange around the outer rim and can easily cope with irregular shaped openings. Intumescent fire barrier pads and ,acoustic Pads are now available for PEMCO PVC Drylining Boxes.

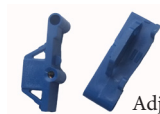
PEMCO PVC Drylining Boxes are Tested in Accordance with EN 60670-1 EN 60695-2-1.

PVC Dry-lining Boxes

Product Code	Description	Size	Qty
10109	1 Gang Dry Lining Box Inner Dim 74 x 74 x 47mm CW 1 x 20mm round KO 1 x 25mm round KO 2 - 25 x 16mm MT KO's	47mm	20-Tray 100-Box
10109 BLK	Black 1 Gang Dry Lining Box Inner Dim 74 x 74 x 47mm CW 1 x 20mm round KO 1 x 25mm round KO 2 - 25 x 16mm MT KO's	47mm	20-Tray 100-Box
10110	2 Gang Dry Lining Box Inner Dim 134 x 74 x 47mm CW 1 x 20mm round KO 1 x 25mm round KO 2 - 25 x 16mm MT KO's	47mm	10-Tray 50-Box
10110 BLK	Black 2 Gang Dry Lining Box Inner Dim 134 x 74 x 47mm CW 1 x 20mm round KO 1 x 25mm round KO 2 - 25 x 16mm MT KO's	47mm	10-Tray 50-Box
10124	Circular Dry Lining Box Inner Dim 55 x 65mm Outer 90mm CW 2 x 20mm round KO's Brass Earth Terminal and screw	55mm	10-Tray 100-Box
10134	Adjustable Blue Lug		100



◀ 3.5mm Brass Inserts



Adjustable Blue Lug



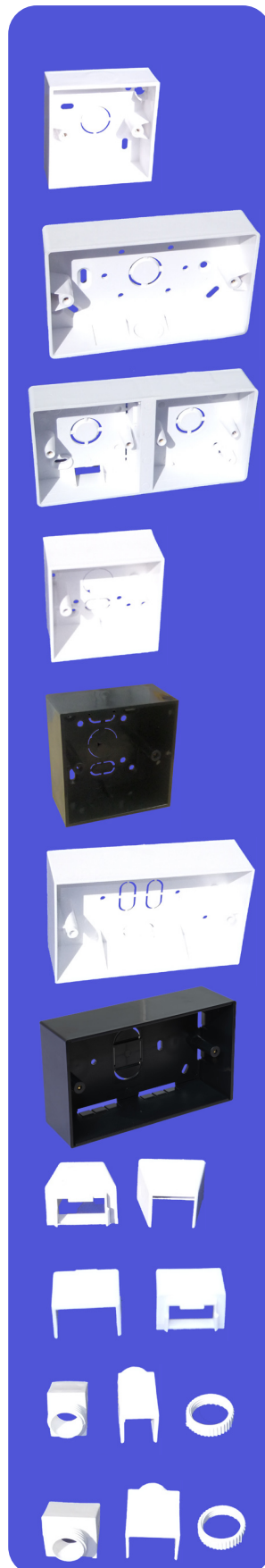
PVC Switch & Socket Boxes

PEMCO PVC Surface Boxes are manufactured in Ireland from High Quality Self Extinguishing PVC. Pemco PVC Surface Boxes come with 3.5mm Brass Inserts. The Universal Surface Boxes have 20mm Round and Mini Trunking Knockouts, open back. The 32mm Surface Boxes and the Eco Surface Box have 20mm Round and Mini Trunking Knockouts, closed back.

PEMCO PVC Surface Boxes are Tested in Accordance with EN 60670.1 EN 60695-2-1.

PVC Surface Boxes

Product Code	Description	Size	Qty
10130	1 Gang Surface Box Rounded Corners Dim 86 x 88 x 32mm Closed Back CW 1 x 20mm round KO 1 x 25mm round KO 1 x 25 x 16mm MT KO	32mm	100
10131	2 Gang Surface Box Round Corners Dim 147 x 88 x 32mm Closed Back CW 1 x 20mm round KO 1 x 25mm round KO 1 x 25 x 16mm MT KO	32mm	100
10132	Dual Surface Box Round Corners Dim 170 x 85 x 32mm Closed Back CW 2 x 25mm oval KO 6 x 25 x 16mm MT KO	32mm	50
10125	1 Gang Surface box Dim 85 x 85 x 44mm Closed Back CW 1 x 25mm round KO 2 x 22.5mm oval KO	44mm	100
10125BLK	Black 1 Gang Surface box Dim 85 x 85 x 44mm Closed Back CW 1 x 25mm round KO 2 x 22.5mm oval KO	44mm	100
10126	2 Gang Surface Box Dim 147 x 85 x 44mm Closed Back CW 4 x 25mm oval KO'S	44mm	50
10126BLK	Black 2 Gang Surface Box Dim 147 x 85 x 44mm Closed Back CW 4 x 25mm oval KO'S	44mm	50
10120 (A)	Surface Box Adaptors Snap In For use with Surface Boxes with MT KO	16x16mm	10
10121 (B)	Surface Box Adaptors Snap In For use with Surface Boxes with MT KO	25x16mm	10
10776 (A)	Trunking Adaptor with Locknut For use with Surface Boxes CW with 20mm Round KO	16x16mm	10
10777 (B)	Trunking Adaptor with Locknut For use with Surface Boxes CW with 20mm Round KO	25x16mm	10

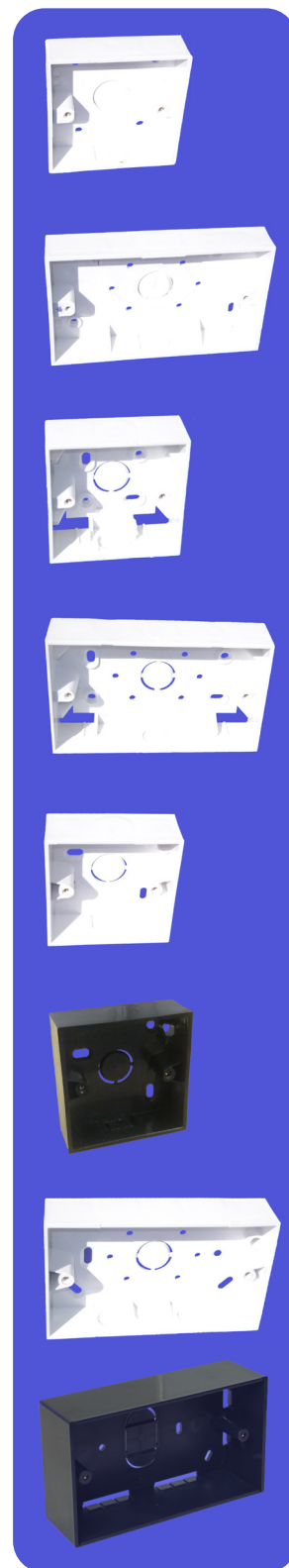




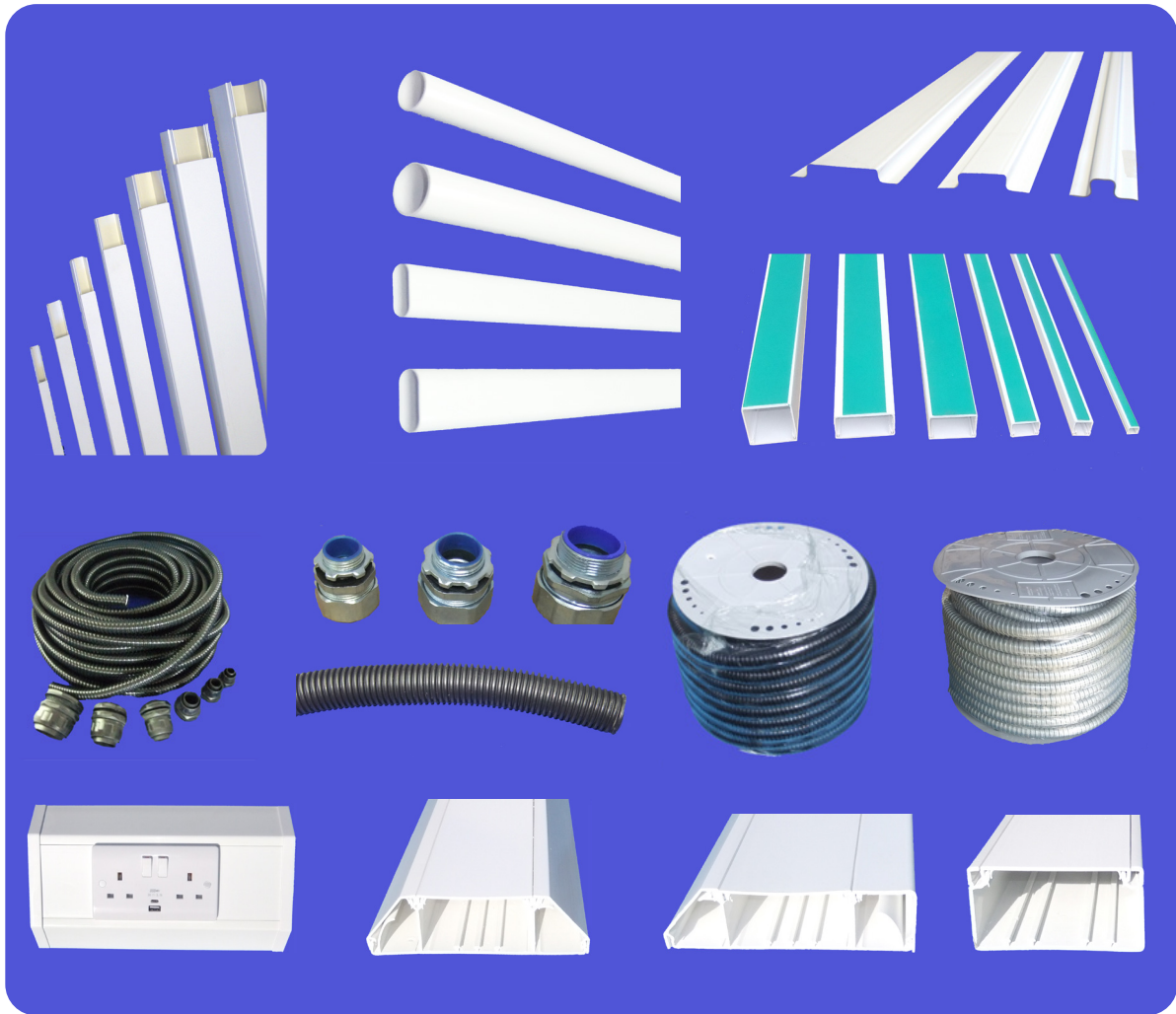
PVC Switch & Socket Boxes

PVC Surface Boxes

Product Code	Description	Size	Qty
10122	1 Gang Surface Box Dim 85 x 85 x 25mm Closed Back CW 1 x 25mm round KO 2 x 25 x 16mm MT KO	25mm	100
10123	2 Gang Surface Box Dim 147 x 85 x 25mm Closed Back CW 1 x 25mm round KO 2 - 25 x 16mm MT KO	25mm	100
10113	1 Gang Universal Box Dim 85 x 85 x 32mm - Open Corner CW 2 x 20mm round KO's 1 x 25mm round KO 4 x 25 x 16mm MT KO's	32mm	100
10114	2 Gang Universal Box Dim 147 x 85 x 32mm Open Corner CW 2 x 20mm round KO's 1 x 25mm round KO 4 x 25 x 16mm MT KO's	32mm	100
10118	1 Gang JT Surface Box Dim 85 x 85 x 32mm Closed Back CW 1 x 20mm round KO 1 x 25mm round KO 1 x 25 x 16mm MT KO	32mm	100
10118 BLK	1 Gang JT Surface Box Black Dim 85 x 85 x 32mm Closed Back CW 1 x 20mm round KO 1 x 25mm round KO 1 x 25 x 16mm MT KO	32mm	100
10119	2 Gang JT Surface Box Black Dim 147 x 85 x 32mm Closed Back CW 3 x 20mm round KO 1 x 25mm round KO 3 x 25 x 16mm MT KO	32mm	100
10119 BLK	2 Gang JT Surface Box Black Dim 147 x 85 x 32mm Closed Back CW 3 x 20mm round KO 1 x 25mm round KO 3 x 25 x 16mm MT KO	32mm	100



Cable Management



CABLE MANAGEMENT SPECIALISTS

PEMCO is Ireland's leading only manufacturer and leading supplier of cable management solutions for commercial, industrial, healthcare, education and domestic markets.

PVC-U TRUNKING SYSTEMS

Our PVC-U cable containment systems are easy to install, light to handle and cost-effective to use. We have a wide range of solutions in different heights, designs and cable capacities for the distribution of power and data, making it an excellent choice of material for the majority of commercial education and healthcare environments. PVC-U is a self-extinguishing material and therefore helps to stop the spread of fire.

We have been using recycled material in the manufacture of our trunking systems for over 25 years; We take our impact on the environment seriously and are doing our best to minimise our effect.

MINI AND MAXI TRUNKING

Our Mini and Maxi trunking systems are easy to install, light to handle and cost-effective to use. We have a wide range of PVC-U trunking solutions in different heights, designs, cable capacities for the distribution of power and data; making it an excellent choice of material for the majority of commercial, education and healthcare environments. PVC-U is a self-extinguishing material and therefore helps to stop the spread of fire.

PEMCO offer a full range of cable management systems for all kinds of, electrical installations. Superior quality features characterise the extensive product choice of trunking, conduits, channeling and accessories.

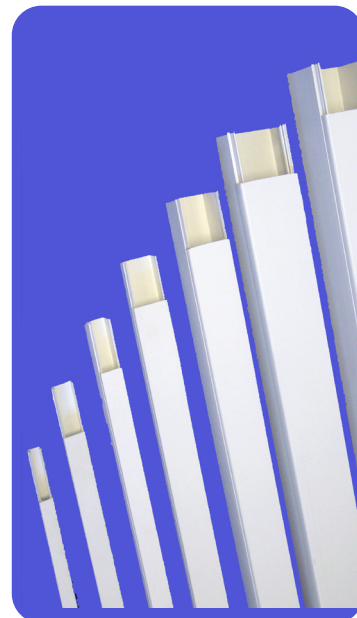


Cable Management

PEMCO PVC Trunking is manufactured in Bray with High Quality PVC (Non Flame Propagating) in 3 metre lengths. Manufactured in accordance with Spec EN 50085, BS 4678 Part 4, VDE 0604-1.

PVC Trunking

Product Code	Description	Size	Qty Per Bale
10701	PVC Trunking White	16x12mm	75 metres
10702	PVC Trunking White	16x16mm	75 metres
10785	PVC Trunking White	18x9mm	150 metres
10703	PVC Trunking White	25x16mm	75 metres
10706	PVC Trunking White	25x25mm	60 metres
10704	PVC Trunking White	40x16mm	60 metres
10705	PVC Trunking White	40x25mm	60 metres
10707	PVC Trunking White	40x40mm	30 metres
10708	PVC Trunking White	50x25mm	30 metres
10709	PVC Trunking White (2"x2")	50x50mm	24 meters
10709/BLK	PVC Trunking Black (2"x2")	50x50mm	24 meters
10710	PVC Trunking White (3"x2")	75x50mm	18 metres
10711	PVC Trunking White (3"x3")	75x75mm	12 metres
10712	PVC Trunking White (4"x1")	100x25mm	18 metres
10714	PVC Trunking White (4"x4")	100x100mm	12 metres
10791	PVC Trunking- Brown	40x25mm	60 metres
10792	PVC Trunking- Black	40x25mm	60 metres
16000	PVC Trunking White	150x60mm	6 metres
16001	Fillet for 50/170 + 100/50 + Bench Trunking		



Floor Cable Trunking

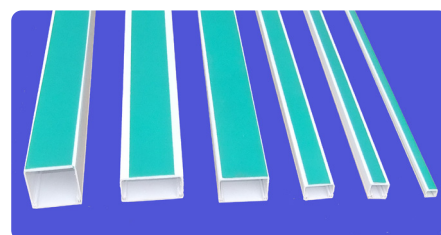
Product Code	Description	Size
18050	Floor Cable Trunking 2meter Lengths (White CAP)	75mmx17mm



PEMCO Self Adhesive Trunking White is manufactured in Bray with High Quality PVC (Non Flame Propagating) in 3 metre lengths with, High Quality Double Sided Adhesive Tape 1mm depth suitable for fixing in a wide variety of applications. Self Adhesive Tape is Oiled, Based for better Adhesion and will not Fall Off in Damp Conditions. Manufactured in accordance with Spec EN 50085, BS 4678 Part 4, VDE 0604-1

Self Adhesive Trunking White Two Way Tape

Product Code	Description	Size	Qty per bale
10715	Self Adhesive PVC Trunking	10x8mm	150 metres
10717	Self Adhesive PVC Trunking	16x12mm	75 metres
10718	Self Adhesive PVC Trunking	16x16mm	75 metres
10780	Self Adhesive PVC Trunking	18x9mm	150 metres
10719	Self Adhesive PVC Trunking	25x16mm	75 metres
10782	Self Adhesive PVC Trunking	25x25mm	60 metres
10720	Self Adhesive PVC Trunking	40x16mm	60 metres
10721	Self Adhesive PVC Trunking	40x25mm	60 metres
10781	Self Adhesive PVC Trunking	40x40mm	30 metres
10786	Self Adhesive PVC Trunking	50x25mm	30 metres



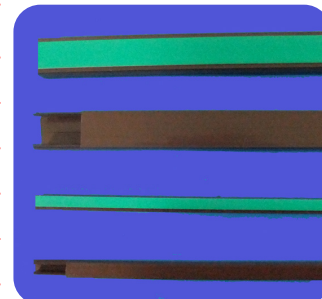


Cable Management

PEMCO Self Adhesive Trunking Coloured is manufactured in Bray with High Quality PVC (Non Flame Propagating) in 3 metre lengths with High Quality Double Sided Adhesive Tape 1mm depth suitable for fixing in a wide variety of applications. Manufactured in accordance with Specification EN 50085, BS 4678 Part 4, VDE 0604-1 Self Adhesive Tape is Oiled Based for better Adhesion and will not Fall Off in Damp Conditions.

Self Adhesive Trunking Coloured Two Way Tape

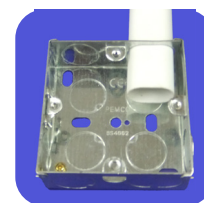
Product Code	Description	Size	Qty per Bale
10722	Self Adhesive Trunking - Brown	10x8mm	150 metres
10778	Self Adhesive Trunking - Brown	16x16mm	75 metres
10779	Self Adhesive Trunking - Brown	25x16mm	75 metres
10783	Self Adhesive Trunking - Brown	18x9mm	150 metres
10784	Self Adhesive Trunking - Brown	40x25mm	60 metres
10797	Self Adhesive Trunking - Red	25x16mm	75 metres
10793	Self Adhesive Trunking - Black	25x16mm	75 metres
10794	Self Adhesive Trunking - Black	40x25mm	60 metres



PEMCO 23mm Super Oval PVC Rigid Conduit is designed specifically for the Irish market due to the Regulation IS 201-4 twin and earth Insulated electrical cable change to allow 2 x 2.5mm² Twin & Earth Cabling.

23mm Super Oval PVC Rigid Conduit

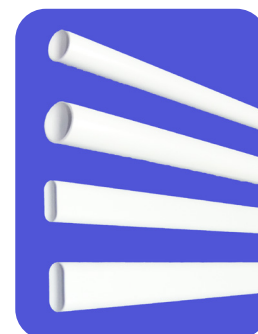
Product Code	Description	Size	Qty per Bale
10788	Oval	23mm	150 metres



PEMCO PVC Rigid Conduits are manufactured in Ireland with High Quality PVC in Standard 3 metre lengths. BS EN 61386-21:2004+A11: 2010 Working temperatures -50oc/+ 60oc. Manufactured in accordance with Specification EN 50086-2-1.

PVC Rigid Conduit

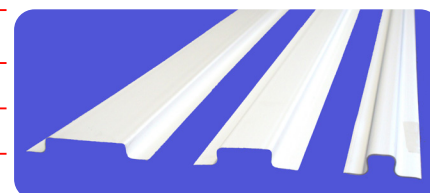
Product Code	Description	Size	Qty per Bale
10728	Round White	20mm	150 metres
10729	Round White	25mm	75 metres
10723	Oval	16mm	150 metres
10724	Oval	20mm	150 metres
10725	Oval	22.5mm	150 metres
10726	Oval	26mm	150 metres



PEMCO PVC Channeling are manufactured in Ireland with High Quality PVC. Various sizes are available and come in 2 metre lengths. PVC Channeling is Self Extinguishing. PEMCO PVC Channeling is Ideal for the Protection of Cable and Channeling of Cables. Manufactured in accordance with Specification EN 50086-2-1.

PVC Channeling

Product Code	Description	Size	Qty per Bale
10795	PVC Channeling	12mm	100 metres
10730	PVC Channeling	25mm	100 metres
10796	PVC Channeling	38mm	100 metres





Cable Management

Conduit Accessories

PEMCO Conduit Accessories are manufactured with High Quality PVC and suitable for use with the Rigid Conduits.

Product Code	Description	Size	Qty
10300	Inspection Bend	20mm	20
10301	Inspection Tee	20mm	20
10302	Inspection Elbow	20mm	20
10303	Normal Bends	20mm	20
10304	Spacerbar Saddle	20mm	100
10305	Snap Saddle	20mm	100
10306	Coupler	20mm	100
10307	Bending Spring	20mm	1
10308	Male Adaptor	20mm	100
10309	Female Adaptor	20mm	100
10309/O	Double Side Opening Female Adaptor	20mm	100
10326	U Clip Open Saddle	20mm	100
10327	U Box	20mm	20
10328	Angle Box	20mm	20
10329	Straight Thru Box	20mm	20
10330	Tee Box	20mm	20
10331	End Box	20mm	20
10323	Y Box	20mm	20
10324	H Box	20mm	20
10332	4 Way Box	20mm	20
10336	4 Way PVC Loop in Box	20mm	20
10310	Single PVC Blank Plate	85x85	25
10311	Twin PVC Blank Plate	85x145	25
10312	PVC Circular Lid	65mm	25
10312/Exring	Extension Ring	20mm	20
10313	Spacerbar Saddle	25mm	100
10314	Male Adaptor	25mm	100
10315	Normal Bend	25mm	20
10320	Female Adaptor	25mm	100
10320/O	Double Side Opening Female Adaptor	25mm	100
10316	Coupler	25mm	100
10317	Snap Saddle	25mm	100
10319	Ceiling Rose Adaptor Box		20
10335	Bending Spring	25mm	1
10334	Inspection Bend	25mm	20
10333	Straight Thru Box	25mm	20
10338	End Box	25mm	25
10343	U Box	25mm	20
10344	Y Box	25mm	20
10345	H Box	25mm	20
10339	Tee Box	25mm	20
10350	4 Way Box	25mm	20
10340	Angle Box	25mm	20
10346	Inspection Elbow	25mm	20
10347	Inspection Tees	25mm	20
10318	Extension Ring	25mm	20



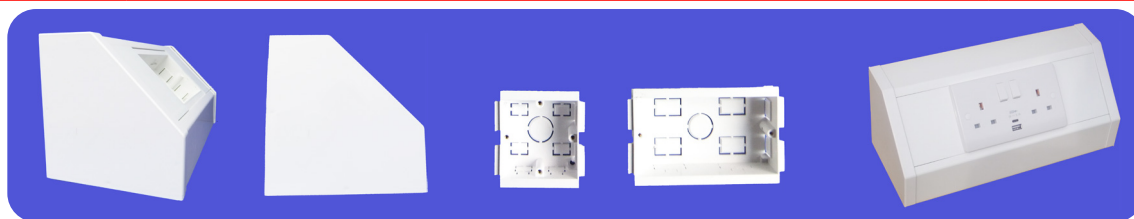


Cable Management

PEMCO Bench Trunking is manufactured in Ireland with High Quality PVC (Non Flame Propagating) PVC is flame retardant and self extinguishing. Available in 3 Metre Lengths and can be divided into 3 Compartments. Boxes End Caps and Couplers also available Bench Units Available on Request. Manufactured in accordance with Spec EN 50085, BS 4678 Part 4, VDE 0604-1

PVC Bench Trunking

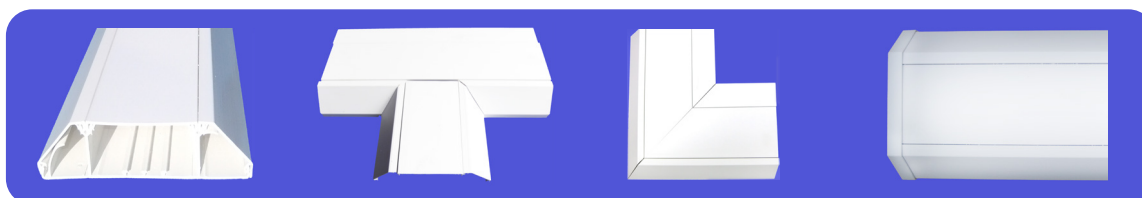
Product Code	Description	Qty
15200	Bench Trunking Complete with Lid and Base (3 metre lengths)	Per Metre
15001	1 Gang Box (SLB1) 82 x 85mm Dept 28mm	1
15002	2 Gang Box (SLB2) 85 x 142mm Dept 28mm	1
15201	Coupler	1
15202	End Cap	1
16001	Fillet for 50/170 + 50/100 (3 metre lengths)	Per Metre
15204	Bench Trunking Internal Angle - Fabricated	1
15205	Bench Trunking External Angle - Fabricated	1
15210	Bench Unit Single Sided c/w 1 x 1 Gang Box	1
15211	Bench Unit Single Sided c/w 1 x 2 Gang Box	1
15212	Bench Unit Single Sided c/w 1 x 1 Gang Box & 1 x 2 Gang Box	1
15213	Bench Unit Single Sided c/w 2 x 1 Gang Box	1
15214	Bench Unit Single Sided c/w 2 x 2 Gang Box	1



The PEMCO Emerald Line Dado Trunking (50 x 170mm) is a high-capacity cable management solution designed to meet the increasing demands of modern data and power installations. Its generous internal space allows for efficient separation and routing of services, supporting Cat 5e, 6 and 7 compliance. Made from durable, non-flame propagating PVCu in accordance with BS EN 50085-1:2005.

PVC Emerald Line Dado Trunking & Accessories

Product Code	Description	Size	Qty
15100	Dado Trunking	50x170mm	3 Metre Per Length
15101	Dado Internal Angle	50x170mm	1
15102	Dado External Angle	50x170mm	1
15103	Dado Coupler	50x170mm	10
15104	Dado End Cap	50x170mm	10
15107	Dado Flat Bend (Moulded)	50x170mm	1
15108	Dado Flat Tee (moulded)	50x170mm	1
15001	1 Gang Box SLB1 Inner Dimensions	68x68mm Dept 28mm	20
15002	2 Gang Box SLB2 Inner Dimensions	68x128mm Dept 28mm	10
16001	Fillet for	50x170mm	1



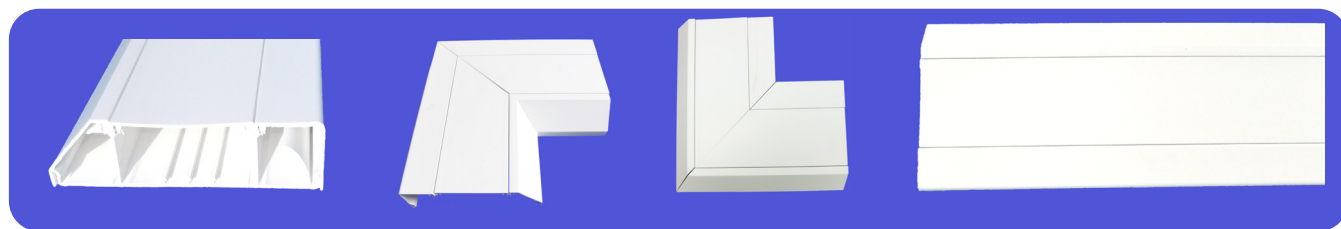


Cable Management

PEMCO Emerald Line Skirting Trunking and Emerald Line Dado Trunking are manufactured with High Quality PVC in 3 metre lengths designed to provide segregation and access of power, data and communication cables at Skirting level. We stock a full range of accessories to suit.

PVC Emerald Line Skirting Trunking & Accessories

Product Code	Description	Size	Qty
13000	Skirting Trunking SLS	50x170mm	3 Metres Per Length
13001	Internal Angles SIE	50x170mm	1
13002	External Angles SAE	50x170mm	1
13008	Flat Bend Upward SFWU	50x170mm	1
13009	Flat Angle Downward SFWD	50x170mm	1
13010	Flat Tee Upward SFTU	50x170mm	1
13012	Flat Tee Downward SFTD	50x170mm	1
13003	Coupler SK	50x170mm	10
13004	End Cap Right SER	50x170mm	10
13005	End Cap Left SEL	50x170mm	10
15001	1 Gang Box SLB1 Inner Dimensions	68x68mm Dept 28mm	20
15002	2 Gang Box SLB2 Inner Dimensions	68x128mm Dept 28mm	10
16001	Fillet for	50x170mm	1



PEMCO Maxi Trunking is manufactured with High Quality PVC (Non Flame Propagating) in 3 metre lengths. It can be divided into 2 or 3 compartments depending on the requirements and there are a wide range of accessories available to suit each size.

PVC Emerald Line Maxi Trunking & Accessories

Product Code	Description	Size	Qty WBale
17000	Maxi Trunking (4"x2")	100x50mm	12 metres Per Bale
17005	Cover Joint MK	100x50mm	10
17006	Stop End ME	100x50mm	10
17009	Internal Bend(Moulded) MIE CAT 5E Friendly	100x50mm	1
17010	External Bend(Moulded) MAE CAT 5E Friendly	100x50mm	1
17011	Flat Angle (Moulded) MFW CAT 5E Friendly	100x50mm	1
17012	Flat Tee (Moulded) MFT CAT 5E Friendly	100x50mm	1
17007	1 Gang Box SLB1 Inner Dimensions	68x68mm Dept 28mm	20
17008	2 Gang Box SLB2 Inner Dimensions	68x128mm Dept 28mm	10
16001	Fillet for	150x50mm	1



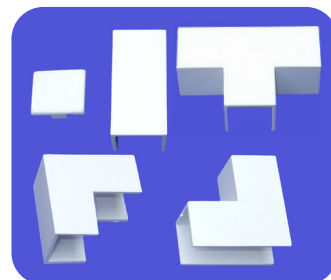


Cable Management

PEMCO Trunking Accessories are manufactured in Bray with High Quality PVC colour matching the PVC Trunking and Self Adhesive Trunking. There are a wide variety available to suit many installations.

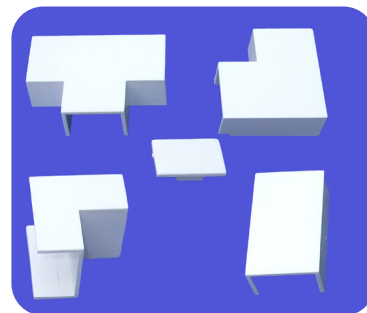
Trunking Accessories 16mm x 16mm

Product Code	Description	Size	Qty
10731	Internal Bend	16 x 16mm	1
10732	External Bend	16 x 16mm	1
10733	Flat Bend	16 x 16mm	1
10734	Tee Piece	16 x 16mm	1
10735	Coupler	16 x 16mm	1
10751	End Cap	16 x 16mm	1



Trunking Accessories 25mm x 16mm

Product Code	Description	Size	Qty
10736	Internal Bend	25 x 16mm	1
10737	External Bend	25 x 16mm	1
10738	Flat Bend	25 x 16mm	1
10739	Tee Piece	25 x 16mm	1
10740	Coupler	25 x 16mm	1
10752	End Cap	25 x 16mm	1



Trunking Accessories 40mm x 16mm

Product Code	Description	Size	Qty
10741	Internal Bend	40 x 16mm	1
10742	External Bend	40 x 16mm	1
10743	Flat Bend	40 x 16mm	1
10744	Tee Piece	40 x 16mm	1
10745	Coupler	40 x 16mm	1
10753	End Cap	40 x 16mm	1



Trunking Accessories 40mm x 25mm

Product Code	Description	Size	Qty
10746	Internal Bend	40 x 25mm	1
10747	External Bend	40 x 25mm	1
10748	Flat Bend	40 x 25mm	1
10749	Tee Piece	40 x 25mm	1
10750	Coupler	40 x 25mm	1
10754	End Cap	40 x 25mm	1
10790	Unequal Tee 40 x 25mm to 25 x 16mm		1





Cable Management

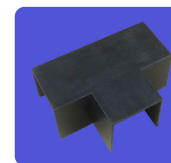
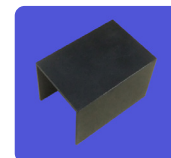
Trunking Accessories 50mm x 50mm

Product Code	Description	Size	Qty
10755	Internal Bend	50 x 50mm	1
10756	External Bend	50 x 50mm	1
10757	Flat Bend	50 x 50mm	1
10758	Tee Piece	50 x 50mm	1
10759	Coupler	50 x 50mm	1
10760	End Cap	50 x 50mm	1



Trunking Accessories 50mm x 50mm Black

Product Code	Description	Size	Qty
10755BLK	Internal Bend	50 x 50mm	1
10756BLK	External Bend	50 x 50mm	1
10757BLK	Flat Bend	50 x 50mm	1
10758BLK	Tee Piece	50 x 50mm	1
10759BLK	Coupler	50 x 50mm	1
10760BLK	End Cap	50 x 50mm	10



Trunking Accessories End Caps

Product Code	Description	Size	Qty
10767	End Cap	75 x 75mm	1
10774	End Cap	100 x 100mm	1



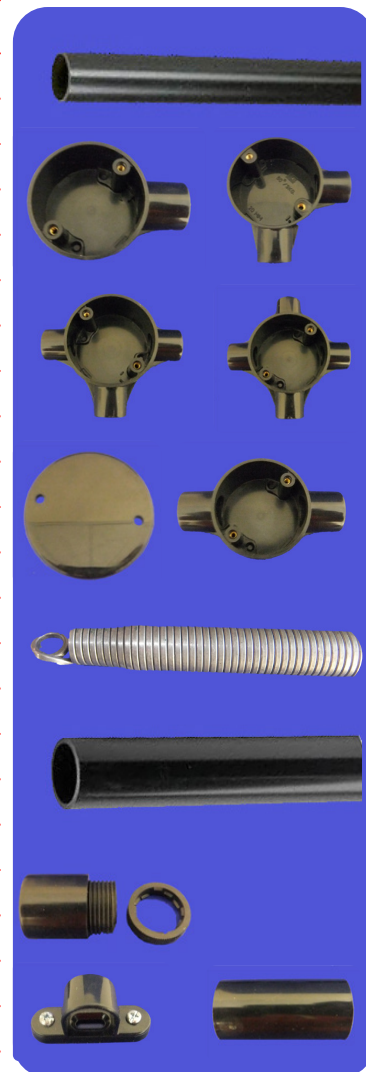


PROGRESS ELECTROPLATING AND MANUFACTURING CO.LTD

Cable Management

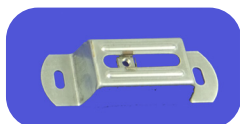
PVC Rigid Conduit Black and Accessories

Product Code	Description	Size	Qty
10727	Round Black	20mm	150 metres
19081	Terminal Box	20mm	20/Box
19082	Through Box	20mm	20/Box
19083	Angle Box	20mm	20/Box
19084	Tee Box	20mm	20/Box
19085	Intersection Box	20mm	20/Box
19086	Coupler	20mm	100/Box
19087	Spacer Bar Saddle	20mm	100/Box
19087/Snap	Snap Saddle	20mm	100/Box
19088	Male Adaptor	20mm	100/Box
19089	Bending Spring	20mm	1
19089/NUT	Lock Nut Black	20mm	100/Pack
10729/BLK	Round Black	25mm	75 metres
19071	Terminal Box	25mm	20/Box
19072	Through Box	25mm	20/Box
19073	Angle Box	25mm	20/Box
19074	Tee Box	25mm	20/Box
19075	Intersection Box	25mm	20/Box
19074/U	U Box	25mm	20/Box
19074/Y	Y Box	25mm	20/Box
19076	Coupler	25mm	100/Box
19077	Spacer bar Saddle	25mm	100/Box
19078	Male Adaptor	25mm	100/Box
19079	Circular Blank Plate	65mm	100/Box

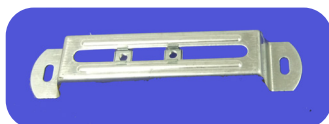


Stand off Brackets

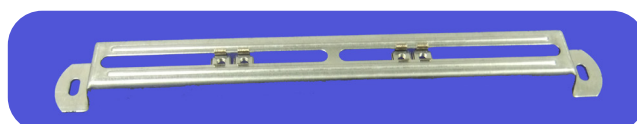
Product Code	Description	Size	Qty
19200	Stand off Bracket c/w Nuts	50mm	50/400
19201	Stand off Bracket c/w Nuts	75mm	50/400
19202	Stand off Bracket c/w Nuts	100mm	50/400
19203	Stand off Bracket c/w Nuts	150mm	50/200
19204	Stand off Bracket c/w Nuts	225mm	20/80
19205	Stand off Bracket c/w Nuts	300mm	20/80



PC: 19201



PC: 19203



PC: 19205

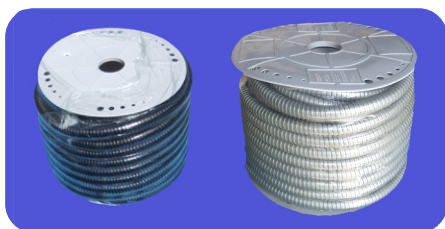


Cable Management

PEMCO Galvanised Flexible Conduit is manufactured from Pre Galvanised Sheet Steel of 0.35mm thickness helically wound and covered with, black PVC coating. Manufactured in accordance with Spec EN61386. Glands to suit are manufactured in Brass, also available without PVC Coat.

Galvanised Flexible Conduit and Glands

Product Code	Description	Size	Qty Per-coil/pack
25000	Metal Galvanised Flexible Conduit with PVC Coating	20mm	30 metres
25001	Metal Galvanised Flexible Conduit with PVC Coating	25mm	30 metres
25002	Metal Galvanised Flexible Conduit with PVC Coating	32mm	30 metres
25005	Metal Galvanised Flexible Conduit with No PVC Coating	20mm	30 metres
25006	Metal Galvanised Flexible Conduit with No PVC Coating	25mm	30 metres
25013	Metal Gland IP40 (2 Pieces)	25mm	10
25010	Metal Gland IP68 (Mild Steel Zinc Plated)	20mm	10
25011	Metal Gland IP68 (Mild Steel Zinc Plated)	25mm	10
25012	Metal Gland IP68 (Mild Steel Zinc Plated)	32mm	10



PC: 25000

PC: 25005



PC: 25010

PC: 25011

PC: 25012

Push & Go Metal Glands for Galvanised Conduit

Product Code	Description	Size
25023	Push + Go Metal Gland for Galvanised Conduit	20mm
25026	Push + Go Metal Gland for Galvanised Conduit	25mm



GFE Flexible Conduit and Glands are made of a shock resistant technopolymer on PVC base, UV rays resistant. Self-Extinguishing V0 degree according to UL94 Standard. GFE Flexible Conduit is designed for efficient cable management in industrial, commercial and automation environments.

PVC Flexible Conduit and Glands

Product Code	Description	Size	Qty Per-coil/pack
19043	GFE12	12/16mm	30 metres
19040	GFE16	16/20mm	30 metres
19041	GFE20	20/25mm	30 metres
19042	GFE25	25/30mm	30 metres
19045	GFE32	32/37mm	30 metres
19044	GFE40	40/45mm	30 metres
19048	GFE50	50/56mm	30 metres
19053	GX12 Gland	12/16mm	25
19050	GX16 Gland	16/20mm	25
19051	GX20 Gland	20/25mm	25
19052	GX25 Gland	25/30mm	10
19055	GX32 Gland	32/37mm	10
19054	GX40 Gland	40/45mm	10
19056	GX50 Gland	50/56mm	10





Cable Management



Pliable Flexible Conduit Black Universal Glands Black

Product Code	Description	Size	Qty-Per coil
22000	ECT20 Pliable Conduit Black ECTC1220N	20mm	100 metres
22001	ECT25 Pliable Conduit Black -ECTC1225N LSF	25mm	50 metres
22002	ECT32 Pliable Conduit Black -ECTC1232N	32mm	25 meters
22003	ECTC1525 Black Corrugated Conduit Heavy Duty 750N	25mm	50 metres
22019	M20 Universal Gland Black	20mm	50
22020	M25 Universal Gland Black	25mm	50



Glands IP68. Our Cable glands are devices that you can attach to the end of a cable, to secure it to the equipment as well as keep the wires tidy. These handy devices can be used for telecommunications, control, instrumentation, data cables and electrical power. They are IP68 rated and come in grey, black and, red in sizes from M16 up to M63. Our cable glands come complete with a rubber gasket to ensure an IP68 rating.

Cable Glands

Product Code	Description	Size	Qty Bag/Box
19060	Grey IP68 Cable Range	M20 (6-12mm)	100/1000
19061	Black IP68 Cable Range	M20 (6-12mm)	100/1000
19062	Black IP68 Cable Range	M25 (13-18mm)	100/1000
19068	Turbo Grey IP68 Cable Range	16mm(4-8mm)	100/1000
19063	Turbo Grey IP68 Cable Range	20mm (10-14mm)	100/1000
19059	Turbo Black IP68 Cable Range (Long Thread)	20mm (10-14mm)	100/1000
19064	Turbo Grey IP68 Cable Range	25mm (13-18mm)	100/1000
19065	Turbo Grey IP68 Cable Range	32mm (18-25mm)	100/1000
19066	Turbo Grey IP68 Cable Range	40mm (22-32mm)	100/1000
19067	Turbo Grey IP68 Cable Range	50mm (32-38mm)	100/1000
19069	Turbo Grey IP68 Cable Range	63mm (37-44mm)	100/1000



PEMCO Firetuff Glands are available manufactured in Flame Retarded Nylon 66 material. PEMCO offer a wide variety of Cable glands IP rated and available in various sizes and colours.

Firetuff Glands

Product Code	Description	Size	Qty
10337	FireTuff Gland Red Cable Range	20mm 6-12	10
10341	FireTuff Gland Red Cable Range	25mm 13-18	10





Cable Management

Gland Packs - Include 2 x glands 2 x shrouds 2 x tags 2 x locknuts.

BW Glands - Brass Weather Proof suitable for Indoor use.

CW Glands - Brass Armoured Cable suitable for Outdoor use.

Gland Packs

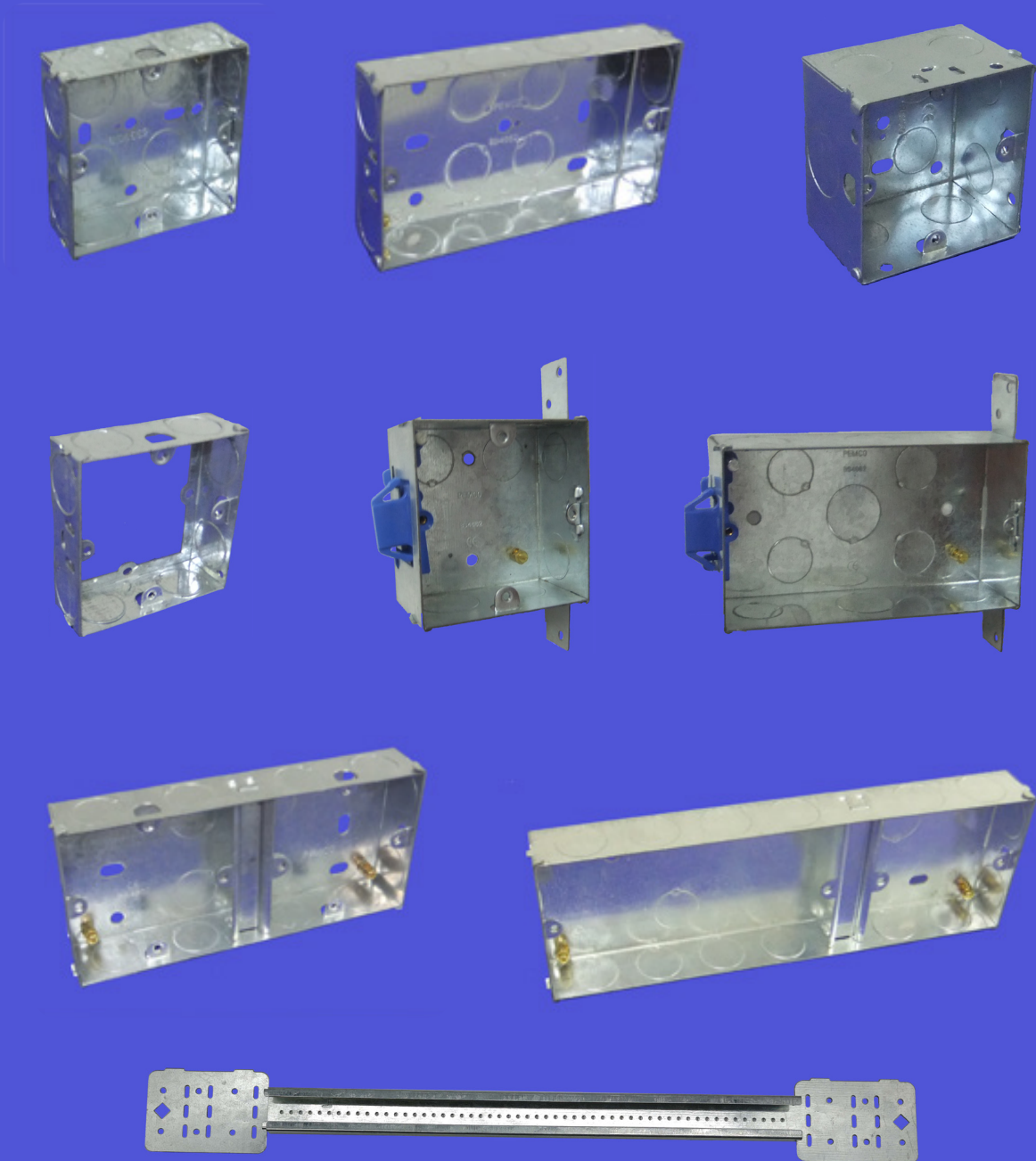
Product Code	Description	Size	Qty Bag/Box
10830	SBW Gland Pack -20SBW	20mm	100/1000
10831	BW Gland Pack-20BW	20mm	100/1000
10833	SCW Gland Pack -20SCW	20mm	100/1000
10834	CW Gland Pack -20CW	20mm	100/1000
10832	BW Gland Pack-25BW	25mm	100/1000
10835	CW Gland Pack-25CW	25mm	100/1000
10836	CW Gland Pack-32CW	32mm	100/1000



PC: 10832



Metal Flush, Switch & Socket Galvanised Boxes



Flush Metal Boxes

PEMCO flush metal galvanised back boxes are made from high quality steel and are available in 0.8mm and 0.9mm thickness. They are commonly installed within hard or solid walls such as brick or stone. This Means they usually require the wall to be chased and chiselled to provide the cut out. Once the front plate of the switch or socket is installed, they should sit flush to the wall for a smart finish.

Pemco stock a full range of Metal Boxes, including Flush, Extension Boxes, Knockout Boxes and accessories. All Boxes are manufactured in accordance with BS4662, with 1mm Pre - Galvanised, Steel they have 1 Fixed and 1 Adjustable Lug and Brass Pillar Type Earth Terminal.



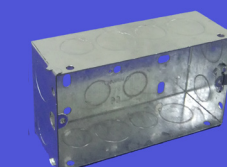
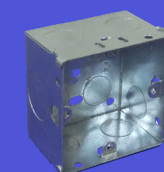
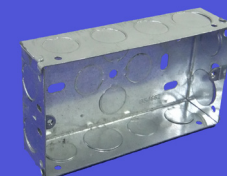
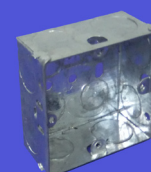
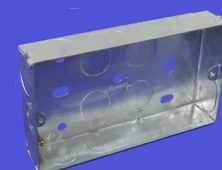
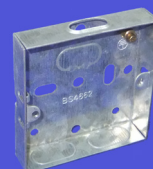
Metal Flush Switch & Socket Galvanised Boxes

PEMCO Metal Boxes are manufactured with 1mm Pre Galvanised Steel, with 1 fixed and 1 adjustable lug and, Brass Pillar Type Earth Terminal. Suitable for domestic and commercial applications. Standard of compliance BS 4662.

Fitted with selection of 20mm and 25mm knockouts in sides and back.

1 Gang & 2 Gang Flush Metal Boxes

Product Code	Description	Size	Qty
10206	1 Gang Metal Box Dim 72 x 72 x 16mm CW 3 x 22.5mm oval KO's 1 x 16mm oval KO	16mm	100 Box
10214	2 Gang Metal Box Dim 132 x 72 x 16mm CW 6 x 22.5mm oval KO's 4 x 20mm round KO's	16mm	50 Box
10215	1 Gang Metal Box Dim 72 x 72 x 25mm CW 12 x 20mm round KO's	25mm	100 Box
10216	2 Gang Metal Box Dim 132 x 72 x 25mm CW 16 x 20mm round KO's	25mm	50 Box
10202	1 Gang Metal Box Dim 72 x 72 x 35mm CW 9 x 20mm round KO's 3 x 25mm round KO's	35mm	100 Box
10203	2 Gang Metal Box Dim 132 x 72 x 35mm CW 13 x 20mm round KO's 3 x 25mm round KO's	35mm	50 Box
10204	1 Gang Metal Box Dim 72 x 72 x 47mm CW 10 x 20mm round KO's 1 x 25mm round KO	47mm	100 Box
10205	2 Gang Metal Box Dim 132 x 72 x 47mm CW 10 x 20mm round KO's 6 x 25mm round KO's	47mm	50 Box



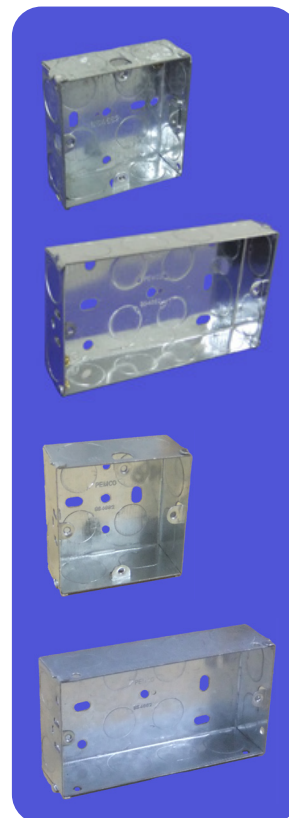


Metal Flush Switch & Socket Galvanised Boxes

PEMCO Metal Boxes are manufactured with 1.0mm Pre Galvanised Steel and come with 1 fixed and 1 adjustable lug and Brass Pillar Type Earth Terminal. Suitable for domestic and commercial applications and fitted with selection of 20mm Round and 23mm Oval KO's. Standard of Compliance BS 4662. EN 60670-1:2005

1 Gang & 2 Gang Flush Metal Boxes (23mm Oval KO's)

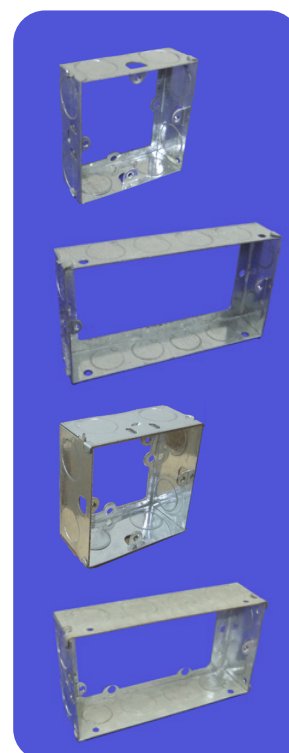
Product Code	Description	Size	Qty
10200	1 Gang Metal Box Dim 72 x 72 x 25mm CW 10 x 20mm round KO's 2 x 23mm Oval KO's	25mm	100
10201	2 Gang Metal Box Dim 132 x 72 x 25mm CW 10 x 20mm round KO's 6 x 23mm Oval KO's	25mm	50
10217	1 Gang Metal Box Dim 72 x 72 x 35mm CW 5 x 20mm round KO's 3 x 25mm round KO's 4 x 23mm Oval KO's	35mm	100
10218	2 Gang Metal Box Dim 132 x 72 x 35mm CW 6 x 20mm round KO's 4 x 25mm round KO's 6 x 23mm Oval KO's	35mm	50



PEMCO Extension Boxes are manufactured with 1mm Pre Galvanised Steel, used for providing extra depth for Metal Boxes.

Extension Boxes

Product Code	Description	Size	Qty
10221	1 Gang Metal Extension Box Dim 72 x 72 x 25mm	25mm	100 Box
10222	2 Gang Metal Extension Box Dim 132 x 72 x 25mm	25mm	50 Box
10223	1 Gang Metal Extension Box Dim 72 x 72 x 35mm	35mm	100 Box
10224	2 Gang Metal Extension Box Dim 132 x 72 x 25mm	35mm	50 Box



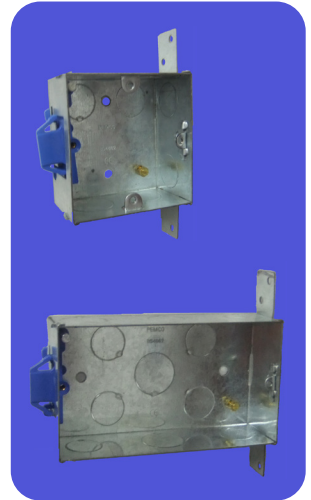


Metal Flush Switch & Socket Galvanised Boxes

PEMCO Metal Side Fixing Boxes are manufactured from Pre Galvanised Steel, complete with Brass Earth Terminal and screw. They are suitable for domestic and commercial use and are specially designed for ease of use in timber framed houses and wooden studdings (partitions). Fixes direct to Vertical Stud No Grounds Needed.

Metal Side Fixing Boxes

Product Code	Description	Size	Qty
10225	1 Gang Side Fixing Box Dim 72 x 72 x 40mm CW 8 x 20mm Round KO's 1 blue adjustable lug Over all length of fixing plate 126mm	40mm	100
10226	2 Gang Side Fixing Box Dim 132 x 72 x 40mm CW 8 x 20mm 3 x 25mm Round KO's 1 blue adjustable lug Over all length of fixing plate 126mm	40mm	50
10134	Adjustable Blue Lug		1

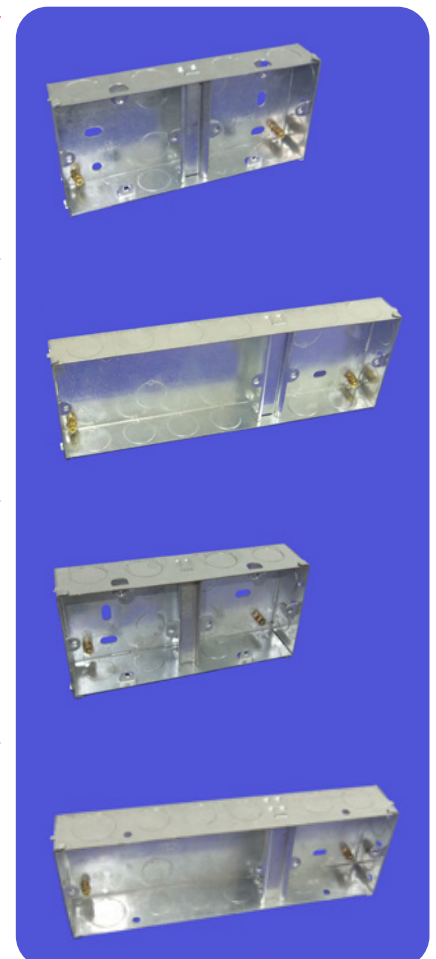


Adjustable Blue Lug

PEMCO Metal Boxes are manufactured with 1mm Pre Galvanised Steel, with 1 fixed and 1 adjustable lug and Brass Pillar Type Earth Terminal. Suitable for domestic and commercial applications.

Metal Dual Flush Boxes

Product Code	Description	Size	Qty.
10211	Metal Dual Box Dim 158 x 72 x 25mm CW 16 x 20mm round KO's	25mm	50
10213	2+1 Gang Metal Dual Box Dim 220 x 72 x 25mm CW 18 x 20mm round KO's	25mm	50
10207	Metal Dual Box Dim 158 x 72 x 35mm CW 16 x 20mm round KO's	35mm	50
10212	2+1 Gang Metal Dual Box Dim 220 x 72 x 35mm CW 16 x 20mm round KO's 2 x 25mm round KO's	35mm	50





Metal Flush Switch & Socket Galvanised Boxes

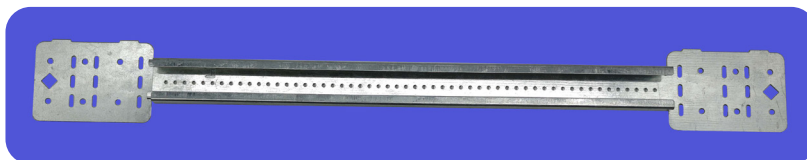
Fire Pads /Fire & Acoustic Pads

Product Code	Description	Qty
29102	1 Gang Fire Pad for Switch & Socket Boxes (SPG) Putty Pads	5
29103	2 Gang Fire Pad for Switch & Socket Boxes (DPG) Putty Pads	5
29105	1 Gang Fire & Acoustic Pads for 47mm Metal Boxes (SPG)/APS/47	10
29106	2 Gang Fire & Acoustic Pads for 47mm Metal Boxes (DPG)/APD/47	10



Rapid Sliding Wall Bracket

Product Code	Description	Size	Qty
10210/G	Rapid Sliding Wall Bracket	"16-24"	50
10210/S	Rapid Sliding Wall Bracket	"10-16"	50



PEMCO Metal Box Joiner is manufactured from Pre Galvanised Steel, and used to join any size metal boxes together, when extra compartments are needed.

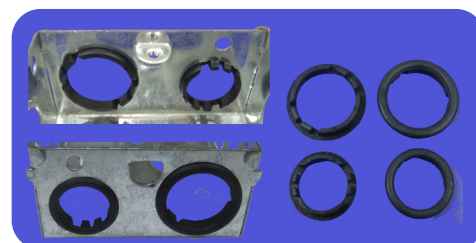
Metal Box Accessories

Product Code	Description	Qty
10209	Joiner for Metal Box	10



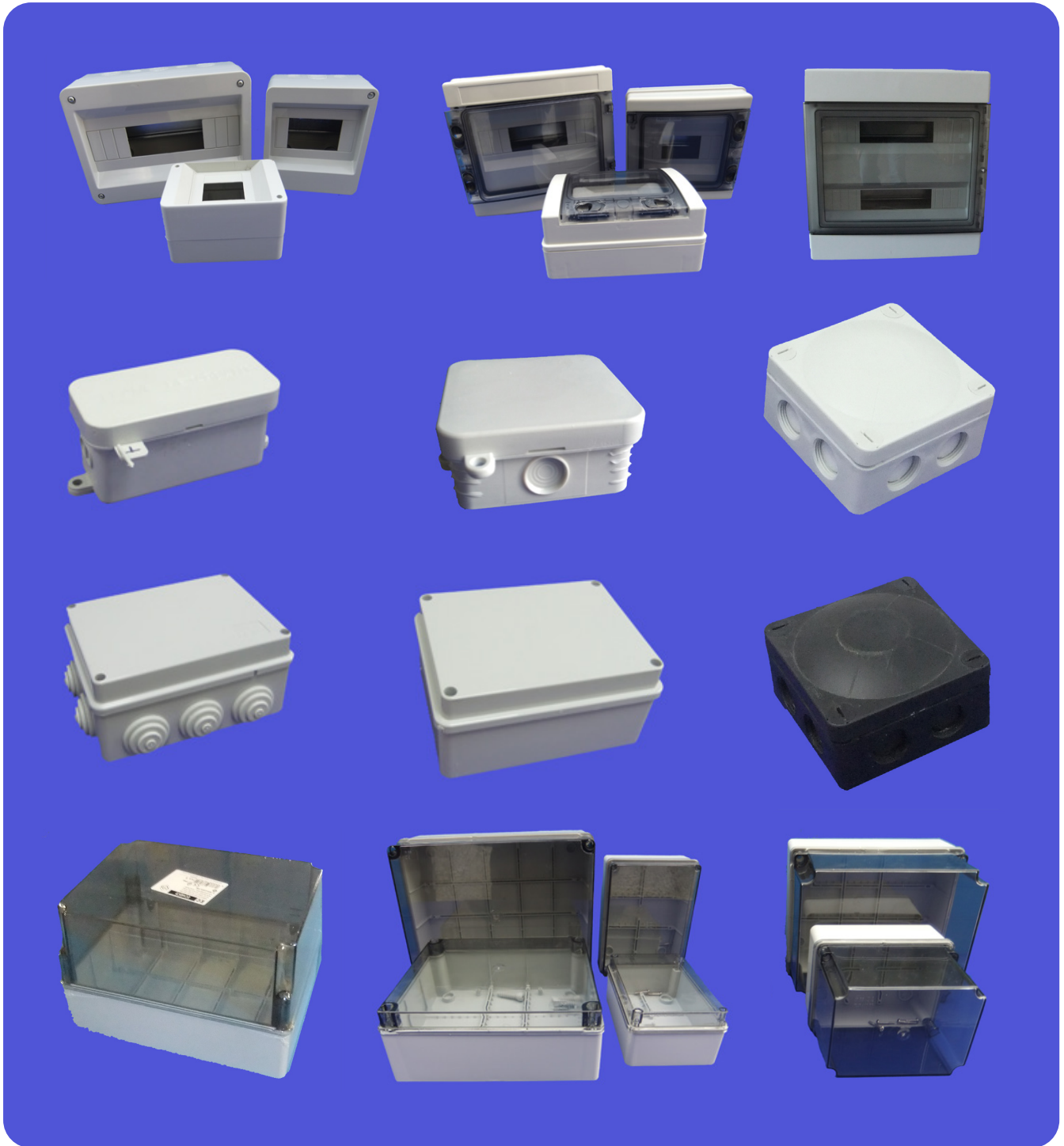
Non Slip Grommets

Product Code	Description	Size	Qty
10250	Non Slip Grommets (for 1 gang 2 gang Metal Boxes)	20mm	100
10251	Non Slip Grommets (for 1 gang 2 gang Metal Boxes)	25mm	100





Enclosures & Junction Boxes



Junction Boxes

PEMCO have developed a large range of electrical adaptable boxes. These are used for enclosing junctions extending circuits and terminating cable lengths. Our junction boxes are robust and come in different shapes and sizes to cover all your electrical needs. They are available with IP54, IP55, IP56 and IP66 ratings with or without knockouts for easy use and when used with our splicing connectors and cable glands will make any job effortless and less time consuming.

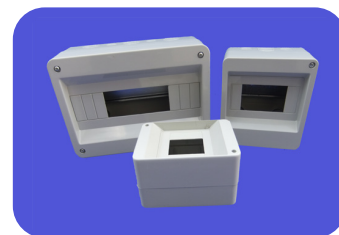
PEMCO stock a complete range of Junction Boxes, IP rated, They can include grommets plain or sided or with knockouts. PEMCO Enclosures with Door IP 65 or Without Door IP 40 come complete with Earth and Neutral Bars. PEMCO Junction boxes are manufactured from Thermoresistant material shock resistant halogen free technopolymer ABS, IP rated.



Enclosures & Junction Boxes

IP40 Enclosures

Product Code	Description	Size/Depth	Qty
19016	IP40 2 Mod Enclosure 61002	50x130x85	50
19017	IP40 4 Mod Enclosure 61003	90x130x85	25
19018	IP40 6 Mod Enclosure 61004	125x80x85	22
19019	IP40 8 Mod Enclosure 61008	175x175x90	15
19020	IP40 12 Mod Enclosure 61012	280x220x100	8



IP65 Enclosures

Product Code	Description	Size/Depth	Qty
10406	IP65 3 Mod Enclosure 62003 (SPS-3 way c/w 63Amp MCB 10 Ka)	175x85x105	40
10406/B	IP65 3 Mod Enclosure 62003 (SPS-3 way Not Including MCB)	175x85x105	40
19021	IP65 4 Mod Enclosure 62004	150x170x100	30
19022	IP65 8 Mod Enclosure 62008	210x200x100	14
19023	IP65 12 Mod Enclosure 62012	285x240x140	8
19024	IP65 24 Mod Enclosure 62024	290x390x130	4
19025	IP65 36 Mod Enclosure 62036	400x400x140	4
19105	IP65 54 Mod Enclosure 62054	400x600x140	1
19106	IP65 72 Mod Enclosure 62072	420x880x150	1



Junction Boxes

Product Code	Description	Size/Depth	Qty
10111	Jobo Box c/w 5Way 15Amp (VDE app) Connector	75x75x37	100
10111/A	Jobo Box c/w c/w 4 Way Inline Lever Connector	75x75x37	100
10112	Junior Jobo Box c/w 3x15amp (VDE app) Connector	90x40x45	100
10112/A	Junior Jobo Box c/w 3 Way Inline Lever Connector	90x40x45	100



PC: 10111

PC: 10112

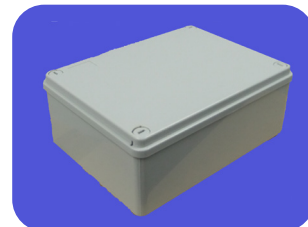
All Enclosures come with Earth and Neutral Bars. PEMCO Enclosures are manufactured with Shock resistant Halogen free UV-resistant technopolymer ABS, IP Rated. PEMCO Junction boxes are manufactured from Thermoresistant material shock resistant halogen free technopolymer on ABS, IP rated.



Enclosures & Junction Boxes

Junction Boxes

Product Code	Description	Size	Qty
20600	Junction Box Plain P4 (c/w Plastic Screws)	100x100x50	100
20601	Junction Box Plain P4R	120x80x50	120
20602	Junction Box Plain P5 (c/w Plastic Screws)	150x110x70	60
20603	Junction Box Plain P6 (c/w Plastic Screws)	190x140x70	30
20604	Junction Box Plain P7 (c/w Plastic Screws)	240x190x90	20
20605	Junction Box Plain P8 (c/w Plastic Screws)	300x220x120	10
20606	Junction Box Plain P9 (c/w Plastic Screws)	380x300x120	10
20607	Junction Box Plain P10 (c/w Plastic Screws)	460x380x120	5



PC: 20603

Junction Boxes Threaded

Product Code	Description	Size	Qty
20810	JBT IP66 GREY C/W 8 20mm 1.5 Threaded KO's & 1 20mm KO	86x86x47	100
20811	JBT IP66 BLACK C/W 8 20mm 1.5 Threaded KO's & 1 20mm KO	86x86x47	100
20812	JBT IP66 RED C/W 8 20mm 1.5 Threaded KO's	86x86x40	100



PC: 20811

PC: 20810

PC: 20812

Junction Boxes with Grommets

Product Code	Description	Size	Qty
20500	Junction Box with Grommets G2	Ø 80x40	200
20501	Junction Box with Grommets G3	80x80x40	160
20502	Junction Box with Grommets G4	100x100x50	100
20503	Junction Box with Grommets G4R	120x80x50	100
20504	Junction Box with Grommets G5	150x110x70	60
20505	Junction Box with Grommets G6	190x140x70	25
20507	Junction Box with Grommets G8	300x220x120	6
20508	Junction Box with Grommets G9	380x300x120	4



PC: 20500

PC: 20501

PC: 20504

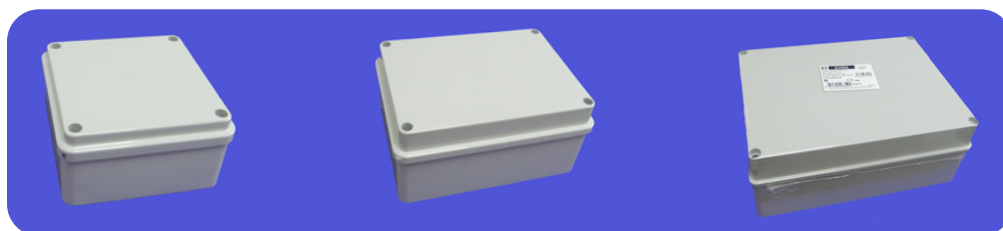


Enclosures & Junction Boxes

Junction Boxes with Screw Lid



Product Code	Description	Size	Qty
19010	Plain Watertight Box with Screw Lid IP 56 410 C4	100x100x50	100
19014	Plain Watertight Box with Screw Lid IP 56 410 C5	150x110x70	42
19012	Plain Watertight Box with Screw Lid IP 56 410 C6	190x140x70	24
19028	Plain Watertight Box with Screw Lid IP 56 410 C7	240x190x90	16
19013	Plain Watertight Box with Screw Lid IP 56 410 C8	300x220x120	6
19015	Plain Watertight Box with Screw Lid IP 56 410 C9	380x300x120	4
19035	Plain Watertight Box with Screw Lid IP 56 410 C10	460x380x120	4



PC: 19010

PC: 19014

PC: 19013

Junction Boxes with Clear Lid



Product Code	Description	Size	Qty
18095	Plain Watertight with Clear Lid IP 56 420 C5	150x110x70	42
18096	Plain Watertight with Clear Lid IP 56 420 C6	190x140x70	24
18097	Plain Watertight with Clear Lid IP 56 420 C7	240x190x90	16
18098	Plain Watertight with Clear Lid IP 56 420 C8	300x220x120	6
18099	Plain Watertight with Clear Lid IP 56 420 C9	380x300x120	4



Junction Boxes with Grey High Screw Lid



Product Code	Description	Size	Qty
19026	Plain Watertight Box with Grey High Screw Lid IP 56 430 C5	150x110x140	18
18071	Plain Watertight Box with Grey High Screw Lid IP 56 430 C6	190x140x140	16
19027	Plain Watertight Box with Grey High Screw Lid IP 56 430 C7	240x190x160	8
18073	Plain Watertight Box with Grey High Screw Lid IP 56 430 C8	300x220x180	4
18074	Plain Watertight Box with Grey High Screw Lid IP 56 430 C9	380x300x180	3



PC: 19026

PC: 18071

PC: 18073

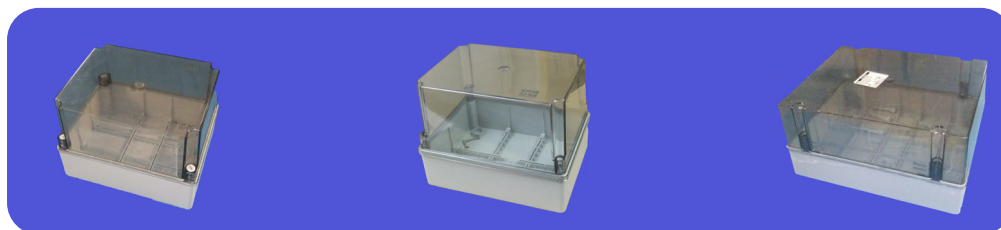


Enclosures & Junction Boxes

Junction Boxes with Clear High Lid



Product Code	Description	Size	Qty
18080	Plain Watertight Box with Clear High Lid IP 56 440 C5	150x110x140	18
18081	Plain Watertight Box with Clear High Lid IP 56 440 C6	190x140x140	16
18082	Plain Watertight Box with Clear High Lid IP 56 440 C7	240x190x160	8
18083	Plain Watertight Box with Clear High Lid IP 56 440 C8	300x220x180	4
18084	Plain Watertight Box with Clear High Lid IP 56 440 C9	380x300x180	3



PC: 18080

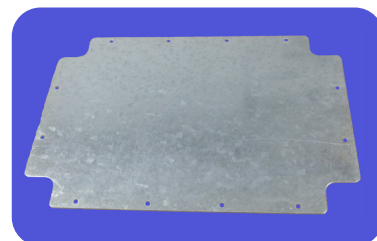
PC: 18083

PC: 18084

Enclosure Accessories

Mounting Plates

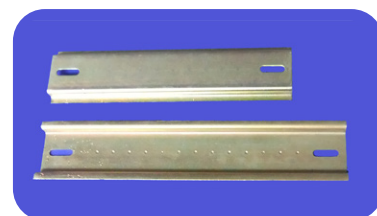
Product Code	Description	Size	Qty
18059	Back Plate for P5	145mm x 105mm	1
18060	Back Plate for P6	190mm x 140mm	1
18061	Back Plate for P7	240mm x 190mm	1
18062	Back Plate for P8	300mm x 220mm	1
18063	Back Plate for P9	380mm x 300mm	1
18064	Back Plate for P10	460mm x 380mm	1



PC: 18062

Din Rail's

Product Code	Description	Size	Qty
19029	Steel Mounting Din Rail 460 D5	150mm	1
19030	Steel Mounting Din Rail 460 D6	190mm	1
19031	Steel Mounting Din Rail 460 D7	240mm	1
19032	Steel Mounting Din Rail 460 D8	300mm	1
19033	Steel Mounting Din Rail 460 D9	380mm	1
19034	Steel Mounting Din Rail 460 D10	460mm	1





Floor Boxes



Pemco stock a raised access 3 compartment floor box that is attractive, durable and a cost effective solution wherever interface points are needed for under-floor cabling.

Applications include power, voice and data points in any combination. They are fully compatible with the under floor powertract in-cavity trunking and cable tray.

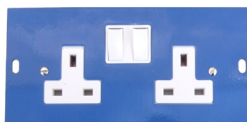
Interchangeable mounting plates accommodate industry standard wiring accessories for each type of cabling.

Floor Boxes & Accessories

Product code	Description	Size	Qty
29000	3 Compartment Floor Box		1
29004	Twin Flat Pate with 2x13amp DP Switched Socket's		1
29003	Twin Blank Plate with 6 KO for RJ45 Data Socket (LJ6C)	22x37mm	1
29001	Metal Plate for Twin Socket		1
29002	Twin Blank Metal Plate	172x85	1
29005	Metal Plate for 2 Single Sockets or 2 Single Plates		1



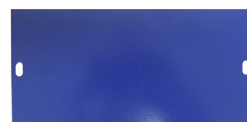
PC: 29000



PC: 29004



PC: 29003



PC: 29002



PC: 29001



PC: 29005



Earthing



Earthing Products

PEMCO Earthing Products are specifically designed with the user's safety in mind. From clamps to rods or boxes, we have them here. All are manufactured to the highest quality to ensure safety should they be needed. PEMCO have a full range of Earthing Equipment including Earth Rods manufactured to ISO9000 standards Earth Clamps, Earth Straps in a range of sizes, Earth Boxes, etc.



Earthing

PEMCO Earth Boxes are manufactured in High Density Polyethylene with Green Lids and are used to protect cable connections to Earth Rods.

Earth Boxes

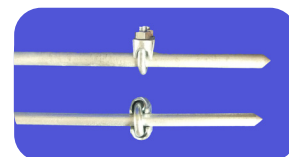
Product Code	Description	Qty
10411	PVC Green Earth Inspection Box	50
10419	Stop Cock Earth Cover Aluminium	25
10430	Earth Pit 5000kg Impact Strength	



PEMCO Earth Rods are fabricated from S 235 JR Steel and Hot dipped galvanised to EN ISO 1461 : 2009 and ASTM A123-02 Standard.

Earth Rods

Product Code	Description	Size	Qty
10400	Earth Rod and Clamp	4ft x 16mm	10
10401	Eath Rod and Clamp	6ft x 3/4"	5



PEMCO Earth Rod Clamps are manufactured in steel and galvanised to Spec DIN 741. Thread Metric M12.

Earth Clamps

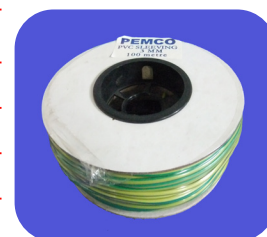
Product Code	Description	Size	Qty
10403	Clamp	16mm	100
10404	Clamp	3/4"	100



PEMCO Earth Sleeving is manufactured from an extruded neoprene/chloroprene compound. Available on a drum or loose coils.

Earth Sleeving

Product Code	Description	Size	Qty
10421	Green/Yellow	4mm	100m Coil
10422	Green/Yellow	6mm	100m Coil
10425	Brown	3mm	100m Drum



PEMCO Earth Straps are manufactured in Phosphor Bronze for the body and strap. Various sizes available to suit most pipe diameters.

Earth Straps (Bonding)

Product Code	Description	Size	Qty
10414	B14 Standard Earth Strap-Pipe (Diametions Size 6mm - 12mm 1/2" - 1 1/4")	6"	20
10407	Earth Strap-Pipe (Diametions Size 50mm - 75mm 2" - 3")	12"	20
10408	Earth Strap-Pipe (Diametions Size 75mm - 125mm 3" - 5")	20"	20
10409	Ezyearth Clamp-(Radiator Clamp)		10



PEMCO Denso Tape is a cold applied tape which remains plastic over a wide temperature range. It is non-hardening and non-cracking.

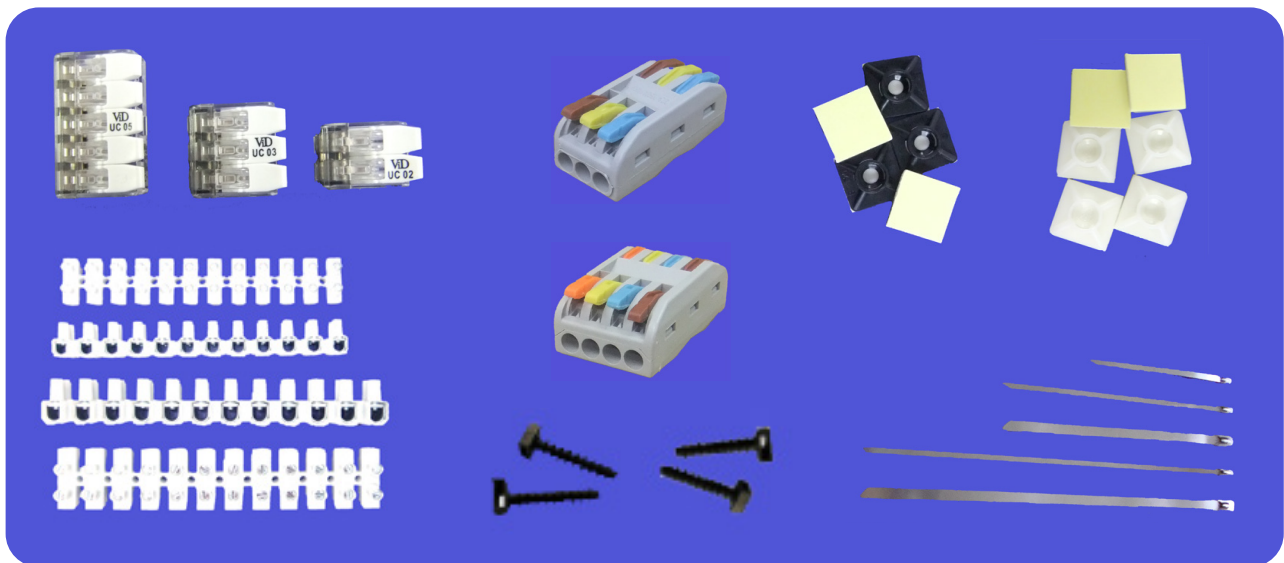
Denso Tape & Anti Static Cleaner

Product Code	Description	Size	Qty
10410	Denso Tape	30mm	40 Box
10416	Denso Tape	50mm	24 Box





Wiring Accessories



Wiring Accessories

PEMCO Electrical and Wiring section covers products such as Electrical Connectors, Adaptable Boxes Switch's and Socket Boxes, Fuses Cable Glands and Plug Tops. All the essential accessories you will need when you are looking to replace the sockets in your home or business or to conceal electrical connections and everything in-between. We have all the products you will need to complete the job.

Strip Connectors

PEMCO Strip Connectors are a modular block with an insulated frame that secures two or more wires together. The insulating body of a terminal block houses a current carrying element (a metal strip or terminal bar).

Toggle Connectors

Our Toggle Connectors are designed to make the splicing or joining of wires together without needing tools. The splicing Connectors are easier to use quicker to install and smaller than your standard strip connectors.

PEMCO wiring accessories combine advanced technology, reliability and distinctive styling. The choice of products and accessories available is extensive and suitable for domestic, commercial and industrial environments. All products comply for testing for verification of conformity.

Twin Outdoor Socket Boxes

Product Code	Description	Rate	Qty
10606	Twin Outdoor Socket Box Grey with Clear Lid	IP65	1
10607	Twin Outdoor Socket Box Grey Lid with Gray Lid	IP65	1



PC: 10606

PC: 10607



Wiring Accessories

Junction Boxes

Product Code	Item No	Description	Qty
21500	Y480	5 Amp 4 Terminal Junction Box White 62mm x 24mm	20
21503	Y482	20 Amp 4 Terminal Junction Box White 58mm x 28mm	20
21501	Y489	20 Amp 4 Terminal Junction Box White 80mm x 30mm	20
21502	Y487	30 Amp 3 Terminal Junction Box White 90mm x 37mm	20



PC: 21501 / Y489

Heavy Duty Junction Boxes

Product Code	Item No	Description	Qty
21504	Y492	100 Amp Single Pole 3 Way Linl Box Black	20
21505	Y493	100 Amp Double Pole 3 Way Linl Box Black	20



PC: 21504/Y492

PC: 21505/Y493

Galvanised Band's

Product Code	Description	Size	Qty Coil
25100	Galvanised Band Black	12m	10 meters
25101	Galvanised Band Black	17m	10 meters



P Clips

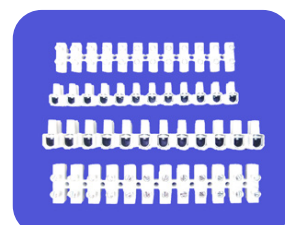
Product Code	Description	Qty
10826	Single P-Clip Red 34R	50
10826/342R	Twin P-Clip Red 342R	50



PEMCO Connector Strips are manufactured with High Quality White Polypropylene for Easy Separation New Design Terminals.
All sizes are in 12way strips. EN: 60998 Certified

Connector Strips

Product Code	Description	Size	Qty
10501	Connector Strip	5amp	10
10503	Connector Strip	15amp	10
10504	Connector Strip	30amp	10
10505	Connector Strip	60amp	10





Wiring Accessories

Toggle Connectors

Toggle Connectors. EN: 60998 Certified

Product Code	Description	Qty
10510	Toggle Connector 2 Way 450V 32Amp	100
10511	Toggle Connector 3 Way 450V 32Amp	100
10512	Toggle Connector 5 Way 450V 32Amp	100



PC: 10512 PC: 10511 PC: 10510

Inline Lever Connectors

Product Code	Description	Size	Qty
10506	3-Way Inline Lever Connector	40x18x15mm	25
10507	4-Way Inline Lever Connector	40x22x15mm	25



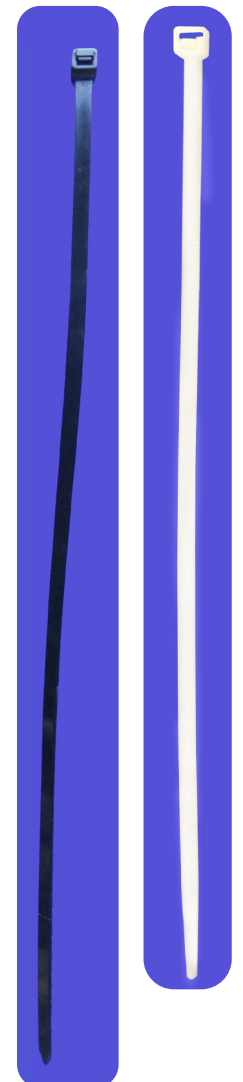
PC: 10506

PC: 10507

PEMCO Nylon Cable Ties are manufactured from High Quality Nylon 66 material. Used for the securing of cables, pipes and hoses immensely strong and virtually indestructible. The non-releasing locking mechanism ensures that the tie will never come off or slacken.

Cable Tie Nylon

Product Code	Description	Size	Qty
10513	Natural Nylon Cable Tie	2.5x100mm	100
10514	Natural Nylon Cable Tie	3.6x150mm	100
10515	Natural Nylon Cable Tie	3.6x200mm	100
10509	Natural Nylon Cable Tie	4.8x200mm	100
10516	Natural Nylon Cable Tie	4.8x300mm	100
10517	Natural Nylon Cable Tie	4.8x350mm	100
10518	Natural Nylon Cable Tie	4.8x400mm	100
10519	Natural Nylon Cable Tie	7.6x300mm	100
10520	Natural Nylon Cable Tie	7.6x350mm	100
10521	Natural Nylon Cable Tie	7.6x400mm	100
10522	Natural Nylon Cable Tie	7.6x500mm	100
10523	Natural Nylon Cable Tie	8.8x550mm	100
10528	Natural Nylon Cable Tie	9x900mm	100
10524	Black Nylon Cable Tie	2.5x100mm	100
10525	Black Nylon Cable Tie	3.6x150mm	100
10526	Black Nylon Cable Tie	3.6x200mm	100
10529	Black Nylon Cable Tie	4.8x200mm	100
10530	Black Nylon Cable Tie	4.8x300mm	100
10531	Black Nylon Cable Tie	4.8x350mm	100
10532	Black Nylon Cable Tie	4.8x400mm	100
10535	Black Nylon Cable Tie	7.2x380mm	100
10533	Black Nylon Cable Tie	7.6x300mm	100
10534	Black Nylon Cable Tie	7.6x350mm	100
10536	Black Nylon Cable Tie	7.6x400mm	100
10537	Black Nylon Cable Tie	7.6x500mm	100
10527	Black Nylon Cable Tie	8.8x550mm	100





PROGRESS ELECTROPLATING AND MANUFACTURING CO.LTD

Wiring Accessories

Black Cable Plugs

Product Code	Description	Size	Qty
10538	Black Cable Plugs TH2 (Xmas Trees)	Product Size 8.1x38.1 Drilling Size 6.0mm	100



PC: 10538

Self Adhesive Pads

Product Code	Description	Size	Qty
10539	Black Self Adhesive Pads	20mmx20mm	100
10541	White Self Adhesive Pads	20mmx20mm	100
10540	Black Self Adhesive Pads	30mmx30mm	100
10542	White Self Adhesive Pads	30mmx30mm	100



PC: 10539
10540

PC: 10541
10542

Stainless Steel Cable Tie's

Product Code	Description	Size	Qty
10548	Stainless Steel	4.6x130mm	100
10549	Stainless Steel	4.6x200mm	100
10550	Stainless Steel	4.6x300mm	100
10551	Stainless Steel	4.6x370mm	100
10552	Stainless Steel	7.9x200mm	100
10553	Stainless Steel	7.9x300mm	100
10554	Stainless Steel	7.9x370mm	100



PEMCO Stainless Steel Cableties are manufactured from High Quality Stainless Steel, they provide the ultimate support for network cables. Self locking head design speeds installation and locks into place at any length along the tie body.



Ventilation

Ventilation

PEMCO White ventilation grill's are designed and intended for use in ventilation systems inside and outside the building, ventilation of residential and commercial premises, but also for kitchens, bathrooms, toilets, garages. Ventilation grille's have inclining louvers that direct the airflow.

Premium Material: The trellis is made of high quality, durable, UV-resistant ABS plastic, environmentally friendly and non-toxic. Perfect combination with other PEMCO ventilation products. You can find more items on the PEMCO website shop, which will help improve your air quality.

PEMCO 100mm 4" Extractor Fan

Product Code	Description	Size
10615/P	100mm Extractor Fan	4"
10619/P	100mm Extractor Fan with Timer	4"
10625/P	100mm Extractor Fan with Humidistat & Timer	4"
10627	100mm Replacement Diffuser	4"



PEMCO 150mm 6" Extractor Fan

Product Code	Description	Size
10617/P	150mm Extractor Fan	6"
10618/P	150mm Extractor Fan with Timer	6"
10628	150mm Replacement Diffuser	6"



PEMCO Round Fan Grill,s

Product Code	Description	Size
10622	Round Fan Grill White 100mm	4"
10624	Round Fan Grill White 150mm	6"



PEMCO Ducting

Product Code	Description	Size	Qty
10620	Flexible Ducting	4"	3 Metre Roll
10624/P	Flexible Ducting	6"	3 Metre Roll





Screws and Fixings



Screws and Fixings

PEMCO offer a wide range of machine screws and plasterboard fixings from 30mm to 100mm in length.



Screws and Fixings

PEMCO Machine Screws are manufactured to the highest standards and available in a wide range of sizes in standard and Brass.

Machine Screws

Product Code	Description	Size	Qty
10801	Machine Screw	M 3.5 x 40mm	1000
10802	Machine Screw	M 3.5 x 50mm	1000
10821	Machine Screw	M 3.5 x 60mm	1000
10803	Machine Screw	M 3.5 x 75mm	1000
10822	Machine Screw	M 3.5 x 100mm	1000
10814	Brass Screw	M 3.5 x 40mm	1000
10815	Brass Screw	M 3.5 x 50mm	1000
10816	Brass Screw	M 3.5 x 60mm	1000
10817	Brass Screw	M 3.5 x 75mm	1000
10804	Brass Screw (Pan head)	M 4 x 6mm	1000
10805	Brass Screw (Pan head)	M 4 x 10mm	1000
10806	Brass Screw (Pan head)	M 4 x 12mm	1000
10807	Brass Screw (Pan head)	M 4 x 16mm	1000
10808	Brass Screw (Pan head)	M 4 x 20mm	1000
10809	Brass Screw (Pan head)	M 4 x 25mm	1000
10810	Brass Screw (Pan head)	M 4 x 30mm	1000
10813	Brass Screw (Pan head)	M 4 x 35mm	1000
10811	Brass Screw (Pan head)	M 4 x 40mm	1000
10812	Brass Screw (Pan head)	M 4 x 50mm	1000
10823	Brass Screw (Pan head)	M 4 x 75mm	1000
10818	Nuts	M 4	1000
10819	Brass N/P Extensio Studs	M 3.5 x 35mm	100
10820	Brass Washers	M 4	500
10824	M 4 c/w M 3.5 Machine Screw Head		100



PC: 10814



PC: 10822



PC: 10818



PC: 10820

Brass Earthing Nuts

Product Code	Description	Size	Qty
10827	Brass Earthing Nut	20mm	75
10828	Brass Earthing Nut	25mm	25
10829	Brass Earthing Nut	32mm	10



PEMCO Plasterboard Fixings are manufactured in high quality zinc alloy and come complete with screw.

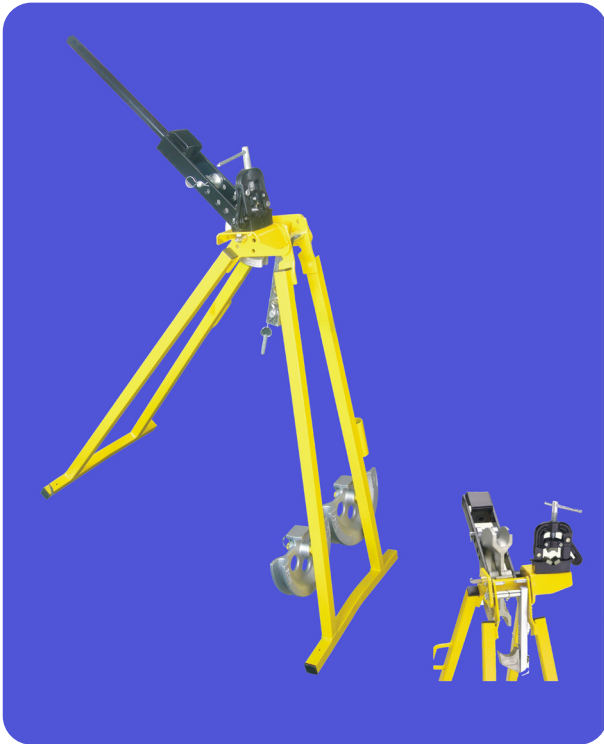
Plasterboard Fixings

Product Code	Description	Size	Qty
10325	Metal Plasterboard Fixings	Fixing 30mm Screw 25mm	100





Steel Conduit Bending Machine



Steel Conduit Bending Machine 20mm - 25mm



Stock and Die Set 20mm & 25mm



Bending Machine Vice

- ◆ High build quality and performance.
- ◆ Competitive prices.
- ◆ Improved features.
- ◆ Compatible with other brands.

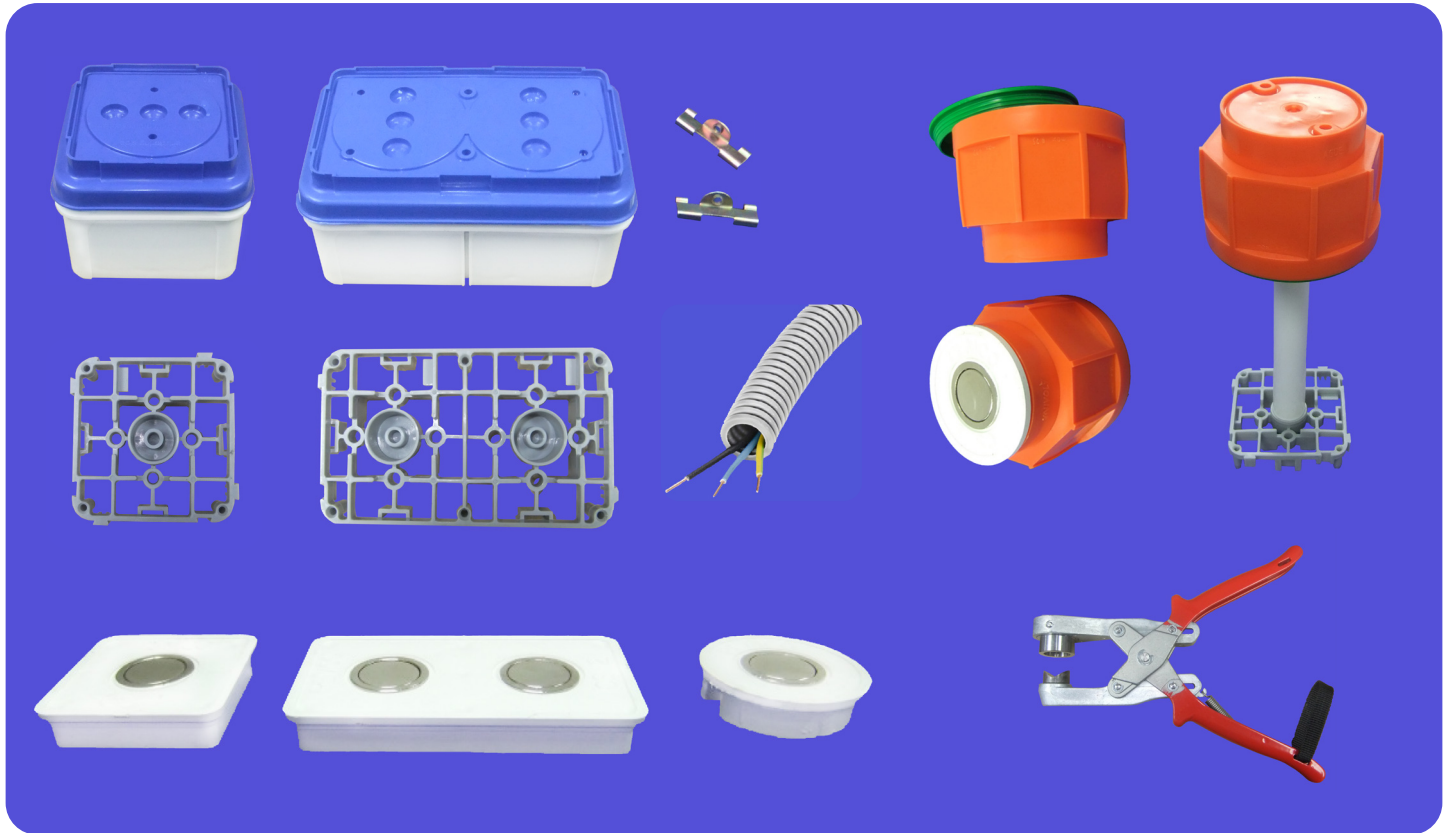
Steel Conduit Bending Machine

Product Code	Description	Size	Qty
29100	Steel Conduit Bending Machine	20-25mm	1
29104	Bending Machine Vice		1
29101	Stock and Die Set	20-25mm	1
29101/A	Replacement Die	20mm	1
29101/B	Replacement Die	25mm	1

- ◆ All our bending machines are fabricated from 30mm square section tubing to provide a rock solid frame which more than stands up to the rigors of daily use.
- ◆ The frame is designed to give maximum stability, minimising the risks of sideways movement or skidding across floors making operation as easy and effective as possible.
- ◆ The formers, which are key to creating a perfect bend, are machined cast aluminium. This means they provide a superior and highly accurate bend as the machined area provides a perfect profile to support the pipe and gives excellent contact and virtually no movement. By comparison, most other brands use non machined die casts.



Concrete Systems



Concrete Wall Boxes Formworks

Wooden formworks

The best solution for mounting of fixing lids on horizontal formworks in is by screw. The main box parts are then simply attached to the positioned fixing lids.

Steel formworks

Today fixing with magnets is the prevailing form for steel formworks. A rubber coat prevents wet concrete from diffusing into the gaps between magnet and formwork and ensures also easy removal of form boards.

Vertical formworks

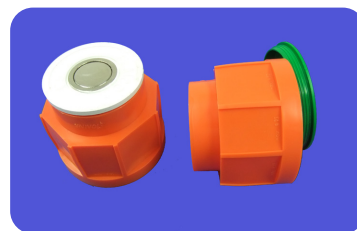
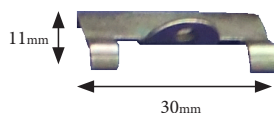
For all cases in which concrete is poured into vertical formworks the installation boxes need to be fixed with spacer tubes and counter supports. This guarantees a secure and firm fixing of the boxes between the form boards.



Concrete Systems

Concrete Wall Boxes

Product Code	Description	Size
26000	Single Gang Concrete Wall Box c/w Adjustable Lugs	86mm x 86mm x 62mm
26001	Twin Gang Concrete Wall Box c/w Adjustable Lugs	86mm x 145mm x 62mm
26004	Adjustable Lug	11mm x 30mm
26005	AGDE Orange Circular Box	80mm x 70mm



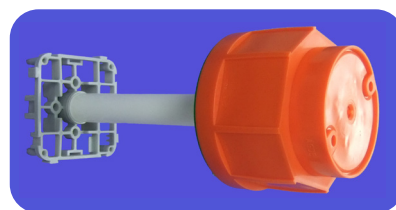
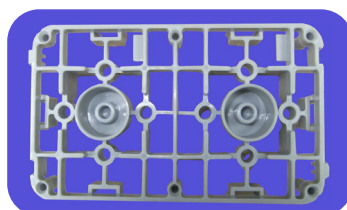
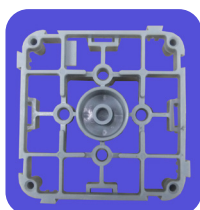
Magnets for Concrete Wall Boxes

Product Code	Description	Size
26002	1 Gang Box Magnet (CS 1)	75mm x 75mm x 18mm
26003	2 Gang Box Magnet (CS 2)	75mm x 134 x 18mm
26006	Round Box Magnet (CS 3)	Ø 65mm x 18mm



Support Brackets for Concrete Wall Boxes

Product Code	Description	Size
26007	1 Gang Box Support Bracket	75mm x 75mm x 20mm
26008	2 Gang Box Support Bracket	75mm x 124mm x 20mm
10728	Solid Wavin Suport/ 20mm Round Conduit	20mm



Pliable Flexible Conduit Grey

Product Code	Description	Size	Qty Per-coil
22006	FXPM20 Pliable Conduit Grey Heavy Duty 750N	20mm	50 meters
22007	FXPM25 Pliable Conduit Grey Heavy Duty 750N	25mm	50 meters
22008	FXPM32 Pliable Conduit Grey Heavy Duty 750N	32mm	25 meters



Punching Tool for Concrete Wall Boxes

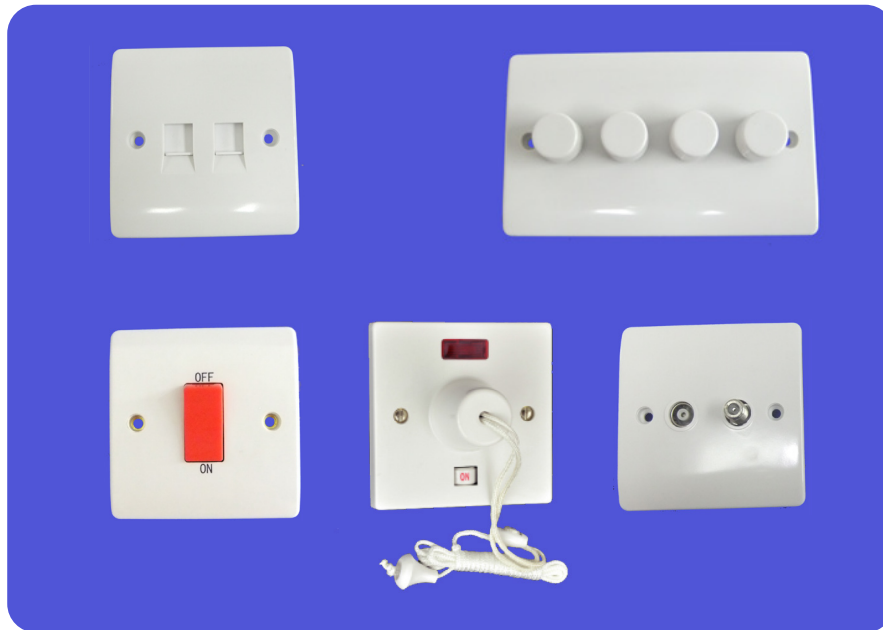
Product Code	Description	Qty
26009	Punching Tool	1
26010	20mm Spare Punch	1
26011	25mm Spare Punch	1



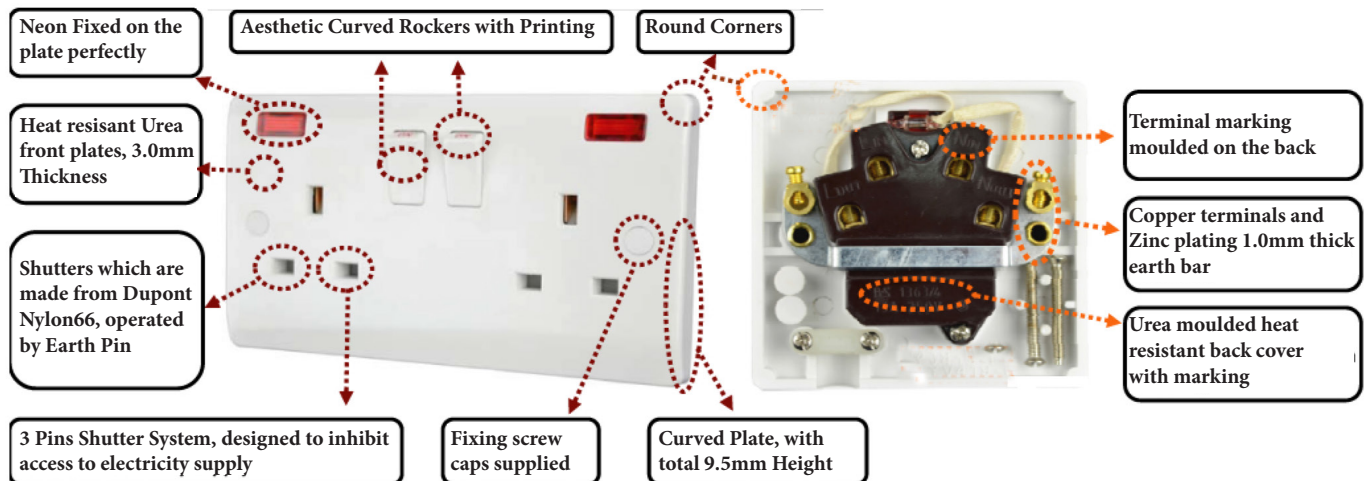


Claddagh Collection

White Soft Edge & Round Corner Range



White Soft Edge & Round Corner Range



Range Introduction

This range is designed to comply with the relevant British Standards. Products are manufactured from heat resistant Urea. Products are suitable for 25mm flush or 32mm surface mounting boxes except for Dual Voltage Shaver Socket. Shaver Socket suitable for 45mm flush or 47mm surface mounting boxes.

Lamp holders and Accessories

Our Lamp holder is a device which mechanically supports and provides electrical connections for a compatible electric lamp. Sockets allow lamps to be safely and conveniently replaced (Re-Lamping). We offer a full range of Lamp holders including, Heat Resistant, Bakelite, Porcelain, Pendant, Kits and accessories. All products are packed together with instruction leaf in individual, clear poly bags to ensure that products remain clean and undamaged right up until the point of installation.

Range Features

- ◆ Urea scratch resistant and Heat Retardant faceplate.
- ◆ Ideal for both home and commercial decorative use.
- ◆ Perfect engineering design that allows all the ribs on the back of front cover with slope angles where the ribs connect to the front plate helps reduce the possibility of sink marks on the front.

Dimensions

- ◆ Product Measurements
 - One Gang: 86mm x 86mm x 9.5mm
 - Two Gang: 146mm x 86mm x 9.5mm
- ◆ Supplied with accessories bag, includes two 30mm, M3.5 fixing screws and 2 pieces of Screw Caps.

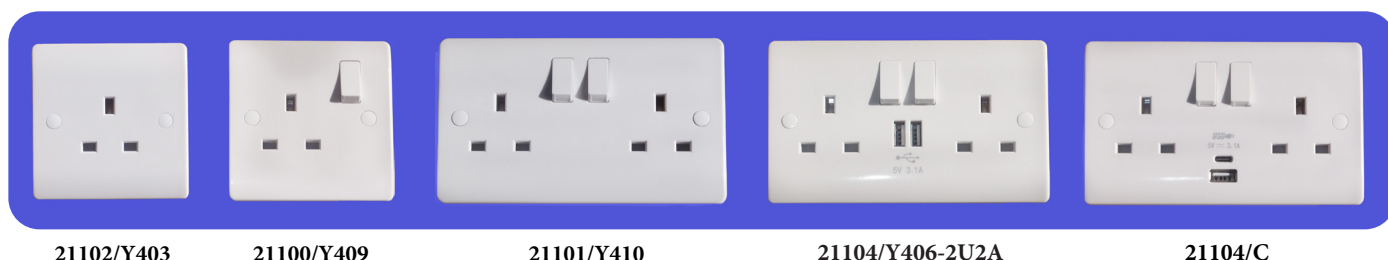


Claddagh Collection

White Soft Edge & Round Corner Range

13 Amp Socket Outlets

Product Code	Item No	Description	Qty
21100	Y409	13 Amp 1 Gang Double Pole Single Switched Socket	10/100
21101	Y410	13 Amp 2 Gang Double Pole Twin Switched Socket	10/100
21102	Y403	13 Amp 1 Gang Single Unswitched Socket	10/100
21103	Y404	13 Amp 2 Gang Twin Unswitched Socket	10/100
21112	Y412	13 Amp 2 Gang Double Pole Twin Switched Socket With Neon	10/100
21104	Y406-2U2A	13 Amp 2 Gang Twin Switched Socket with 2 USB Ports	10/100
21104/C	Y406-2U-3.1A 1C	13 Amp 2 Gang Twin Switched Socket with 1 x A-Port + 1 x C-Port	10/100



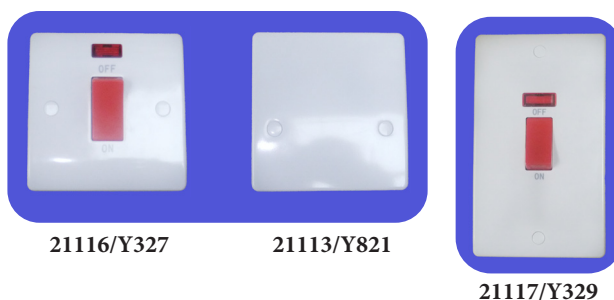
2 Amp - 5 Amp - 15 Amp Socket

Product Code	Item No	Description	Qty
21180	Y429	15 Amp 1 Gang Round Pin Switched Socket	10/100
21181	Y455	2 Amp 1 Gang Round Pin Unswitched Socket	10/100
21182	Y426	5 Amp 1 Gang Round Pin Unswitched Socket	10/100



45 Amp DP Switches, Cooker Panels and Connection Plate

Product Code	Item No	Description	Qty
21113	Y821	45 Amp Cooker Cable Outlet	10/100
21116	Y327	45 Amp 1 Gang Double Pole Switch With Neon	10/100
21117	Y329	45 Amp 2 Gang Large Double Pole Switch With Neon	5/50
21118	Y328	45 Amp Small Double Pole Switch	10/100
21119	Y330	45 Amp 2 Gang Large Double Pole Switch	5/50





Claddagh Collection

White Soft Edge & Round Corner Range

10 Amp Wall Switches

Product Code	Item No	Description	Qty
21105	Y301	10 Amp 1 Gang 1 way Switch	10
21106	Y302	10 Amp 1 Gang 2 Way Switch	10
21107	Y304	10 Amp 2 Gang 2 Way Switch	10
21108	Y306	10 Amp 3 Gang 2 Way Switch	10
21109	Y308	10 Amp 4 Gang 2 Way Switch	10
21110	Y310	10 Amp 6 Gang 2 Way Switch	10
21135	Y313	10 Amp Intermediate Switch	10
21136	Y337	10 Amp 3 Pole Fan Isolator Switch	10
21157	Y322	10 Amp 1 Gang 2 Way Switchg 2 Way Key Switch	10
21158	Y323	10 Amp 1 Gang DP Key Switch	10
21168	Y317	10 Amp 1 Gang Bell Switch/Bell	10
21169	Y316	10 Amp 1 Gang Press Switch	10
21170	Y312	10 Amp DP Switch	10
21171	Y340/Y342	10 Amp 1 Gang 2 Way Architrave Switch & Box	10
21173	Y341/Y343	10 Amp 2 Gang 2 Way Architrave Switch & Box	10
21183	Y315	3 Position Switch	10



21105/Y301

21107/Y304

21108/Y306

21169/Y316

21136/Y337

Blank Plates & Shaver Socket

Product Code	Item No	Description	Qty
21141	Y401	1 Gang Blank Plate	20
21142	Y402	2 Gang Blank Plate	20
21175	Y458	Dual Voltage Shaver Socket	1



21141/Y401

21142/Y402

21175/Y458



Claddagh Collection

White Soft Edge & Round Corner Range

13 Amp Fused Connection Units

Product Code	Item No	Description	Qty
21120	Y419	13 Amp Double Pole Switched Fused Unit With Neon	10/100
21121	Y416	13 Amp Fused Connection Unit	10/100
21122	Y413	13 Amp Fused Connection Unit With Neon	10/100
21123	Y422	13 Amp Double Pole Switched Fused Connection Unit	10/100



21120/Y419

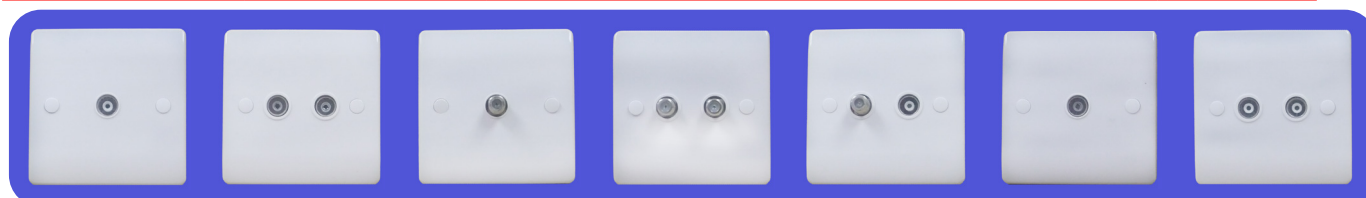
21121/Y416

21122/Y413

21123/Y422

TV and Satellite Socket Outlets

Product Code	Item No	Description	Qty
21143	Y432	1 Gang TV/Coaxial Socket Non-Isolated	10/100
21144	Y433	2 Gang TV/Coaxial Socket Non-Isolated	10/100
21145	Y469 F Type	1 Gang Satellite Socket	10/100
21146	Y469/2 F Type	2 Gang Satellite Socket	10/100
21147	Y468	Satellite Socket & TV Socket	10/100
21148	Y434	1 Gang TV/Coaxial Socket Isolated	10/100
21149	Y435	2 Gang TV/Coaxial Socket Isolated	10/100



21143/Y432

21144/Y433

21145/Y469
F Type

21146/Y469/2
F type

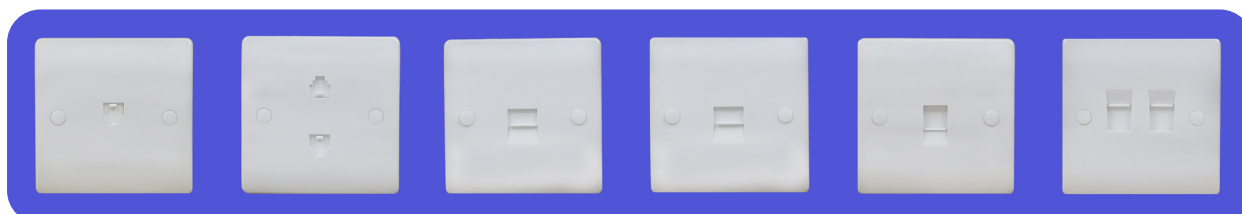
21147/Y468

21148/Y434

21149/Y435

Telephone & Data Socket Outlets

Product Code	Item No	Description	Qty
21130	Y453	1 Gang RJ11 Telephone Socket	10/100
21131	Y454	2 Gang RJ11 Telephone Socket	10/100
21166	Y438	1 Gang Telephone Socket Secondary	10/100
21167	Y439	1 Gang Telephone Socket Master	10/100
21132	Y442	1 Gang RJ45 Data Socket	10/100
21133	Y443	2 Gang RJ45 Data Socket	10/100



PC: 21130/Y453

PC: 21131/Y454

PC: 21166/Y438

PC: 21167/Y439

PC: 21132/Y442

PC: 21133/Y443



Claddagh Collection

White Soft Edge & Round Corner Range

LED Dimmer Switches

Product Code	Item No	Description	Qty
21093	Y354/LED	Soft Edge 1 Gang 2 way 230v LED Dimmer Switch	10/100
21094	Y355/LED	Soft Edge 2 Gang 2 way 230v LED Dimmer Switch	10/100
21095	Y356/LED	Soft Edge 3 Gang 2 way 230v LED Dimmer Switch	10/100
21096	Y357/LED	Soft Edge 4 Gang 2 way 230v LED Dimmer Switch	10/100



PC: 21093
Y354/LED

PC: 21094
Y355/LED

PC: 21095
Y356/LED

PC: 21096
Y357/LED

LED Dimmer Switches

Product Code	Item No	Description	Qty
21097	A354/LED	Square Edge 1 Gang 2 way 230v LED Dimmer Switch	10
21098	A355/LED	Square Edge 2 Gang 2 way 230v LED Dimmer Switch	10
21099	A356/LED	Square Edge 3 Gang 2 way 230v LED Dimmer Switch	10
21010	A357/LED	Square Edge 4 Gang 2 way 230v LED Dimmer Switch	10
12802		Universal Intelligent Dimmer Module for LED Lamps	1



PC: 12802



PC: 21097/
A354/ LED

PC: 21098/
A355/ LED

PC: 21099/A356/LED

PC: 21010/A357/LED

Ceiling Rose, Lamp Holder/Batten Holder & Pandent Set

Product Code	Item No	Description	Qty
21140	Y618	Pendant Set 6" flex cable T2, short skirt	10
21189	Y614	Cord Grip Lamp Holder Short Skirt	20
21185	Y602	Batten Lamp Holder, Short Skirt, 3 Terminals	10
21186	Y601	Batten Lamp Holder, Long Skirt, 3 Terminals	10
21187	Y605	45° Angeled Batten, Long Skirt, 3 Terminals	10
21188	Y604	Batten Lamp Holder & Ceiling Rose Base Short	10



PC: 21140/Y618

PC: 21185/Y602

PC: 21186/Y601

PC: 21187/Y605

PC: 21188/Y604

PC: 21189/Y614



Claddagh Collection

White Soft Edge & Round Corner Range

10 Amp Module Switches

Product Code	Item No	Description	Qty
21159	Y313/MOD	10 Amp Intermediate Module Switch	50
21160	Y302/MOD	10 Amp 1 Gang 2 Way Module Switch	50
21162	Y317/MOD	10 Amp 1 Gang Bell Module Switch	50
21163	Y312/MOD	10 Amp 1 Gang Double Pole Module Switch	50
21164	Y322/MOD	10 Amp 1 Gang 2 Way Key Module Switch	50
21165	Y323/MOD	10 Amp 1 Gang Double Pole Module Key Switch	50
21178	Y322/MOD	10 Amp 1 Gang 2 Way Key Module Switch No Contact	50



PC: 21159
Y313MOD

PC: 21160
Y302MOD

PC: 21162
Y317MOD

PC: 21163
Y312MOD

PC: 21164
Y322MOD

PC: 21165
Y323MOD

PC: 21178
Y322MOD

Euro Modules

Product Code	Item No	Description	Qty
21090	VEP1	1 Gang 1 Port Euro (Media) Plate	10
21091	VEP2	1 Gang 2 Port Euro (Media) Plate	10
21092	VEP4	2 Gang 4 Port Euro (Media) Plate	10
21514	Y5193/WH	Co-Axial Module White	20
21515	Y51RJ11/WH	RJ11 Telephone Module White	20
21517	Y5180/WH	F Type Satellite Socket White	20
21536	Y51RJ45/WH	RJ45 CAT6E Module White	20



21090/VEP1

21091/VEP2

21092/VEP4

Y21514

Y21515

Y21517

Y21536

Y5193/WH Y51RJ11/WH Y5180/WH Y51RJ45/WH



Claddagh Collection

20A DP Module Grid Switches (complete with fixing screws)

20A DP Module Grid Switches White

Product Code	Description	Qty
21702	20Amp DP Switch Y20/White (Wine Cooler)	20/200
21707	20Amp DP Switch Y20/White (Freezer)	20/200
21708	20Amp DP Switch Y20/White (Fridge)	20/200
21709	20Amp DP Switch Y20/White (Fan)	20/200
21710	20Amp DP Switch Y20/White (Television)	20/200
21711	20Amp DP Switch Y20/White (Plain No writing)	20/200
21712	20Amp DP Switch Y20/White/TD (Tumble Dryer)	20/200
21713	20Amp DP Switch Y20/White/WM (Washing Machine)	20/200
21714	20Amp DP Switch Y20/White/MW (Microwave)	20/200
21715	20Amp DP Switch Y20/White/OV (Oven)	20/200
21716	20Amp DP Switch Y20/White/CH (Cooker Hood Fan)	20/200
21717	20Amp DP Switch Y20/White (DishWasher)	20/200
21718	20Amp DP Switch Y20/White/FF (Fridge Freezer)	20/200
21719	20Amp DP Switch Y20/White/HOB (Hob)	20/200
21720	1 Module Blank Plate White Y20/White/BL	20/200
21721	20Amp DP1 Port Plate Y20P1-White	20/200
21722	20Amp DP2 port Plate Y20P2 -White	20/200
21706	20Amp DP3 port Plate Y20P3 -White	20/200
21723	20Amp DP4 port Plate Y20P4-White	10/100



PC: 21712 PC: 21714



PC: 21715 PC: 2171



PC: 21716



PC: 21721

PC: 21722

PC: 21706

PC: 21723

20 Amp DP Switches

Product Code	Item No	Description	Qty
21126	Y325	20 Amp Double Pole Switch	10/100
21125	Y324	20 Amp Double Pole Switch with Neon	10/100
21127	Y324/WH	20 Amp Water Heater Switch Engraved	10/100
21128	Y326	20 Amp Dual Immersion Heater Switch	10/100
21129	Y820	20 Amp Connection Plate	10/100



PC: 21126/Y325

PC: 21125/Y324

PC: 21127/Y324/WH

PC: 21128/Y326

PC: 21129/Y820



Claddagh Collection White Ceiling Accessories White

Pull Cord Switches

Product Code	Item No	Description	Qty
21184	Y321	10Amp 2 Way Pull Switch	10
21115	Y333	45 Amp Double Pole Pull Switch With Neon	10



PC: 21184 / Y321

PC: 21185 / Y333

Doorbells

Product Code	Description	Qty
19111	Door Chime White	1
19112	Wireless Doorbell	1
19115/A	Black Bell Push with Additional White Case	1



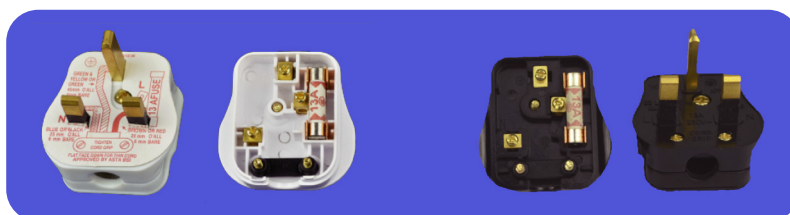
PC: 19111

PC: 19112

PC: 19115/A

13 Amp Plug Tops

Product Code	Item No	Description	Qty
21700	Y258WT	13 Amp Fused Plug Top	10
21701	Y258BK	13 Amp Fused Plug Top	10



PC: 21700 / Y258WT

PC: 21701 / Y258BK



Claddagh Collection

Satin Chrome Round Corner Range



Satin Chrome Front Plate: Made from 1.0mm High Quality Stainless Steel

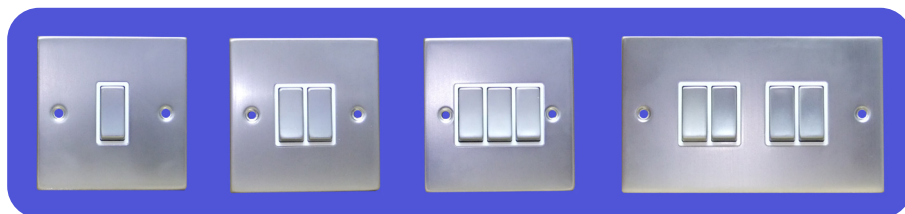


Claddagh Collection

Satin Chrome Round Corner Range

10 Amp Wall Switches White Inserts

Product Code	Item No	Description	Qty
21302	RA302SCWM	10 Amp 1 Gang 2 Way Switch	10
21303	RA304SCWM	10 Amp 2 Gang 2 Way Switch	10
21304	RA306SCWM	10 Amp 3 Gang 2 Way Switch	10
21305	RA308SCWM	10 Amp 4 Gang 2 Way Switch	10
21306	RA310SCWM	10 Amp 6 Gang 2 Way Switch	10
21307	RA313SCWM	10 Amp Intermediate Switch	10
21308	RA337SCWM	10 Amp 3 Pole Fan Isolator Switch	10

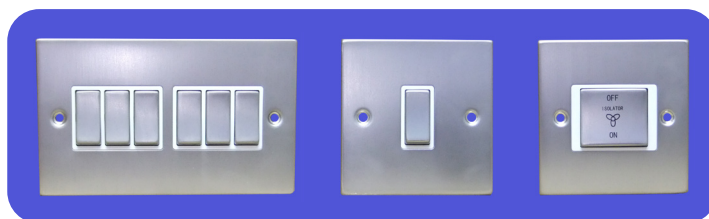


PC: 21302
RS302SCWM

PC: 21303
RS304SCWM

PC: 21304
RS306SCWM

PC: 21305
RS308SCWM



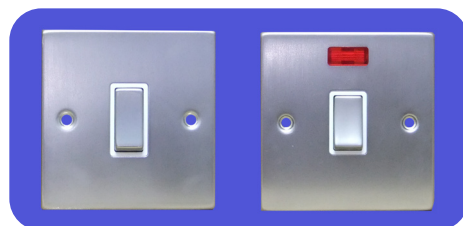
PC: 21306
RS310SCWM

PC: 21307
RS313SCWM

PC: 21308
RS337SCWM

20 Amp DP Switches White Inserts

Product Code	Item No	Description	Qty
21330	RA325SCWM	20 Amp Double Pole Switch	10
21309	RA324SCWM	20 Amp Double Pole Switch With Neon	10



PC: 21330
RS325SCWM

PC: 21309
RS324SCWM



Claddagh Collection

Satin Chrome Round Corner Range

13 Amp Fused Connection Units White Inserts

Product Code	Item No	Description	Qty
21335	RA416SCWM	13 Amp Switched Fused Unit	10
21312	RA413SCWM	13 Amp Fused Connection Unit With Neon	10
21336	RA422SCWM	13 Amp Double Pole Switched Fused Connection Unit	10
21313	RA419SCWM	13 Amp Double Pole Switched Fused Unit With Neon	10
21329	RA419FSCWM	13 Amp Fused Switch c/w Flex Outlet & Neon	10



PC: 21335
RA416SCWM

PC: 21312
RA413SCWM

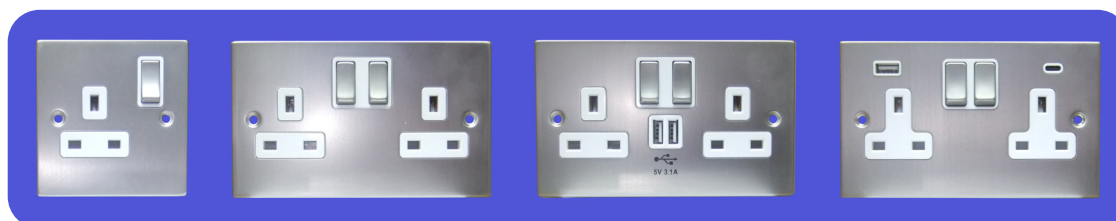
PC: 21336
RA422SCWM

PC: 21313
RA419SCWM

PC: 21329
RA419FSCWM

13 Amp Socket Outlets White Inserts

Product Code	Item No	Description	Qty
21300	RA409SCWM	13 Amp 1 Gang Double Pole Single Switched Socket	10
21301	RA410SCWM	13 Amp 2 Gang Double Pole Twin Switched Socket	10
21340	RA406/2U3AWH	13 Amp 2 Gang Twin Switched Socket with 2 USB Port	10
21304/C	RM406/12U-3.1A CWH	13 Amp 2 Gang Twin Switched Socket SP1 c/w 1 USB A Port & 1 USB C Port	10



PC: 21300
RA409SCWM

PC: 21301
RA410SCWM

PC: 21340
RA406/2U2AWH

PC: 21304/C
RA406/1U-3.1 IACWH

45 Amp DP Switches, Cooker Panels White Inserts

Product Code	Item No	Description	Qty
21310	RA327SCWM	45 Amp Double Pole Cooker Switch With Neon	10
21311	RA329SCWM	45 Amp Large Double Pole Cooker Switch With Neon	10



PC: 21310
RA327SCWM



PC: 21311
RA329SCWM



Claddagh Collection Satin Chrome Round Corner Range

Satin Chrome 20A DP Module Grid Switches & Port Plates Chrome White/Black Inserts

Product Code	Description	Qty
21727	Satin Chrome 20Amp DP Switch Y20 (Plain No writing)	20/200
21728	Satin Chrome 20amp DP Switch Y20/ (Tumble Dryer)	20/200
21729	Satin Chrome 20amp DP Switch Y20/ (Washing Machine)	20/200
21730	Satin Chrome 20amp DP Switch Y20/ (Microwave)	20/200
21731	Satin Chrome 20amp DP Switch Y20/ (Oven)	20/200
21732	Satin Chrome 20amp DP Switch Y20/ (Cooker Hood)	20/200
21733	Satin Chrome 20amp DP Switch Y20/ (DishWasher)	20/200
21735	Satin Chrome 20amp DP Switch Y20/ (Hob)	20/200
21736	Satin Chrome 20amp DP Switch Y20/ (TV)	20/200
21737	Satin Chrome 20amp DP Switch Y20/ (Fan)	20/200
21738	Satin Chrome 20amp DP Switch Y20/ (Fridge)	20/200
21739	Satin Chrome 20amp DP Switch Y20/ (Freezer)	20/200
21724	20amp DP 1 Port Plate Chrome White Insert RMSC20P1W	20/200
21725	20amp DP 2 Port Plate Chrome White Insert RMSC20P2W	20/200
21741	20amp DP 3 Port Plate Chrome White Insert RMSC20P3W	10/100
21726	20amp DP 4 Port Plate Chrome White Insert RMSC20P4W	10/100



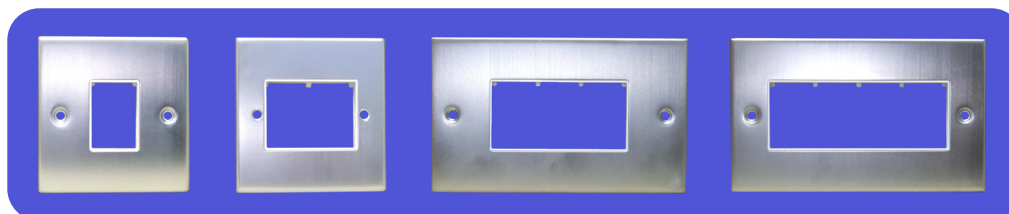
PC: 21729 PC: 21730



PC: 21733 PC: 21737



PC: 21736 PC: 21739



PC: 21724

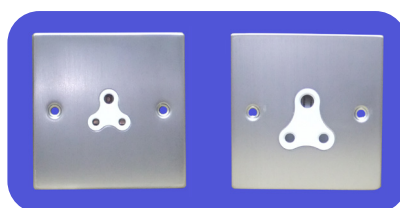
PC: 21725

PC: 21741

PC: 21726

5 Amp Socket Outlets & Shaver Socket White Incerts

Product Code	Item No	Description	Qty
21322	RA455SCWM	2 Amp 1 Gang 3 Round Pin Unswitched Socket	10
21323	RA426SCWM	5 Amp 1 Gang 3 Round Pin Unswitched Socket	10
21342	RA458SCWM	Dual voltage Shaver Socket	1



PC: 21322
RA455SCWM

PC: 21323
RA426SCWM



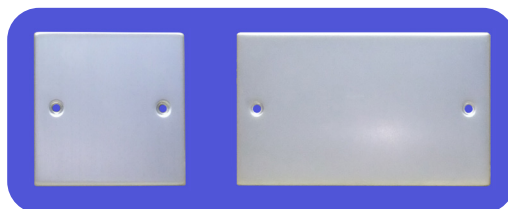
PC: 21342
RA458SCWM



Claddagh Collection Satin Chrome Round Corner Range

Blank Plates Satin Chrome

Product Code	Item No	Description	Qty
21421	RA401SC	1 Gang Blank Plate	20
21422	RA402SC	2 Gang Blank Plate	20



PC: 21421
RA401SC

PC: 21422
RA402SC

TV and Satellite Socket Outlets White Incerts

Product Code	Item No	Description	Qty
21314	RA432SCWM	1 Gang TV/Coaxial Socket Non-Isolated	10
21326	RA433SCWM	2 Gang TV/Coaxial Socket Non-Isolated	10
21315	RA469SCWM	1 Gang Satellite Socket	10
21325	RA469/2SCWM	2 Gang Satellite Socket	10
21327	RA468SCWM	Satellite Socket & TV/Coaxial Socket	10



PC: 21314
RA432SCWM

PC: 21326
RA433SCWM

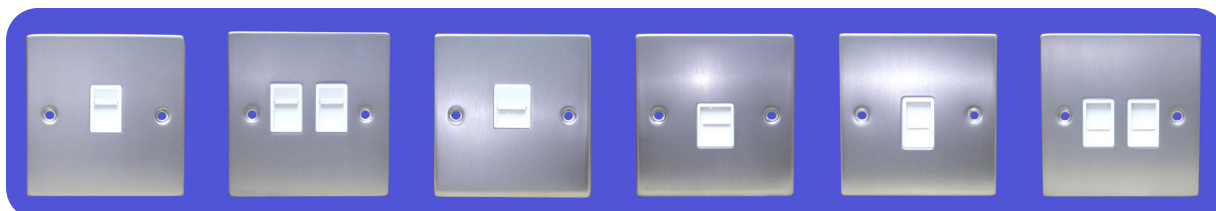
PC: 21315
RA469SCWM

PC: 21325
RA469/2SCWM

PC: 21327
RA468SCWM

Telephone & Data Socket Outlets White Incerts

Product Code	Item No	Description	Qty
21316	RA442 RJ11 SCWM	1 Gang RJ11 Telephone Socket	10
21317	RA443 RJ11 SCWM	2 Gang RJ11 Telephone Socket	10
21320	RA439SCWM	UK 1 Gang Telephone Socket Master	10
21321	RA438SCWM	UK 1 Gang Telephone Socket Secondary	10
21318	RA442RJ45SCWM	1 Gang RJ45 Data Socket	10
21319	RA443RJ45SCWM	2 Gang RJ45 Data Socket	10



PC: 21316/
RA442RJ11SCWM

PC: 21317/
RA443RJ11SCWM

PC: 21320/
RA439SCWM

PC: 21321/
RA438SCWM

PC: 21318/
RA442RJ45SCWM

PC: 21319/
RA443RJ45SCWM

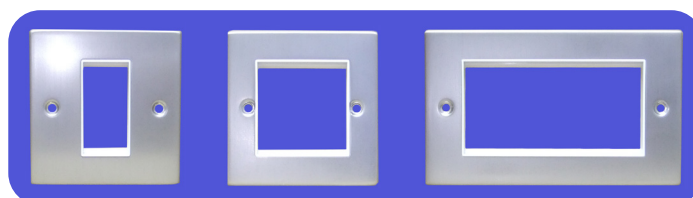


Claddagh Collection

Satin Chrome Round Corner Range

Media Plates White Incerts

Product Code	Item No	Description	Qty
21370	RAVEP1SCWM	1 Gang 1 Port Euro Media Plate	10
21371	RAVEP2SCWM	1 Gang 2 Port Euro Media Plat	10
21372	RAVEP4SCWM	2 Gang 4 Port Euro Media Platt	10



PC: 21370
RAVEP1SCWM

PC: 21371
RAVEP2SCWM

PC: 21372
RAVEP4SCWM

Dimmer Switches

Product Code	Item No	Description	Qty
21350	RA354/400VSC	400 watt 1 Gang 2 way Dimmer Switch	10
21351	RA355/400VSC	400 watt 2 Gang 2 way Dimmer Switch	10
21352	RA356/400VSC	400 watt 3 Gang 2 way Dimmer Switch	10
21353	RA357/400VSC	400 watt 4 Gang 2 way Dimmer Switch	10



PC: 21350
RA354/400VSC

PC: 21351
RA355/400VSC

PC: 21352
RA356/400VSC

PC: 21353
RA357w/400VSC

LED Dimmer Switches

Product Code	Item No	Description	Qty
21354	RA354/230V/LEDSC	1 Gang 2 way LED Dimmer Switch	10
21355	RA355/230V/LEDSC	2 Gang 2 way LED Dimmer Switch	10
21356	RA356/230V/LEDSC	3 Gang 2 way LED Dimmer Switch	10
21357	RA357/230V/LEDSC	4 Gang 2 way LED Dimmer Switch	10



PC: 21354
RA354/230VLEDSC

PC: 21355
RA355/230VLEDSC

PC: 21356
RA356/230VLEDSC

PC: 21357
RA357/230VLEDSC

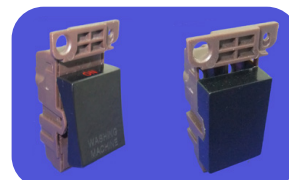


Claddagh Collection

Satin Chrome Round Corner Range

20A DP Module Grid Switches Black & Port Plates Chrome Black Insert

Product Code	Description	Qty
21800	20Amp DP Switch Y20/Black (Plain No writing)	20/200
21801	20Amp DP Switch Y20/Black (Tumble Dryer)	20/200
21802	20Amp DP Switch Y20/ Black (Washing Machine)	20/200
21803	20Amp DP Switch Y20/ Black (Microwave)	20/200
21804	20Amp DP Switch Y20/ Black (Oven)	20/200
21805	20Amp DP Switch Y20/ Black (Cooker Hood)	20/200
21806	20Amp DP Switch Y20/ Black (DishWasher)	20/200
21807	20Amp DP Switch Y20/ Black (Fridge/Freezer)	20/200
21808	20Amp DP Switch Y20/ Black (Hob)	20/200
21809	20Amp DP Blank Plate Black Y20/WH/BL	20/200
21813	20Amp DP Switch Y20/Black (TV)	20/200
21814	20Amp DP Switch Y20/ Black (Fan)	20/200
21815	20Amp DP Switch Y20/ Black (Fridge)	20/200
21816	20amp DP Switch Y20/ Black (Freezer)	20/200
21810	20Amp DP 1 Port Plate Chrome Black Insert RMSC20B1B	20/200
21811	20Amp DP 2 Port Plate Chrome Black Insert RMSC20B2B	20/200
21817	20Amp DP 3 Port Plate Chrome Black Insert RMSC20B3B	10/100
21812	20Amp DP 4 Port Plate Chrome Black Insert RMSC20B4B	10/100



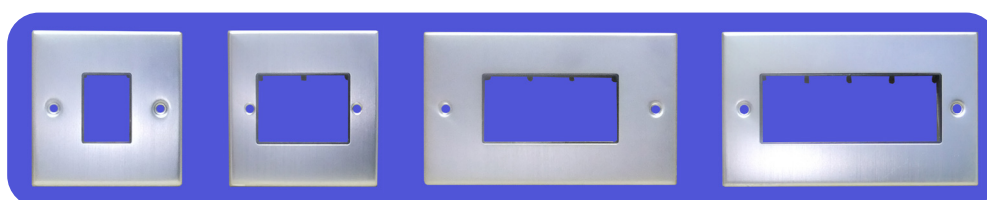
PC: 21802 PC: 21803



PC: 21805 PC: 21807



PC: 21801 PC: 21803



PC: 21810

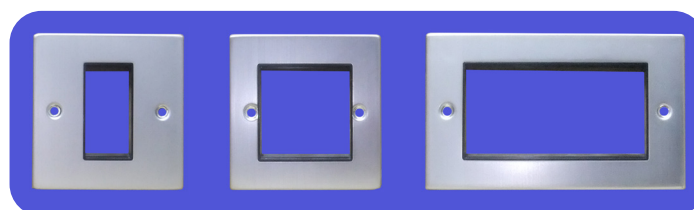
PC: 21811

PC: 21817

PC: 21812

Media Plates Black Incerts

Product Code	Item No	Description	Qty
21450	RAVEP1SCB	1 Gang 1 Port Euro Media Plate	10
21451	RAVEP2SCB	1 Gang 2 Port Euro Media Plat	10
21452	RAVEP4SCB	2 Gang 4 Port Euro Media Platt	10



PC: 21450
RAVEP1SCBM

PC: 21451
RAVEP2SCBM

PC: 21452
RAVEP4SCWM

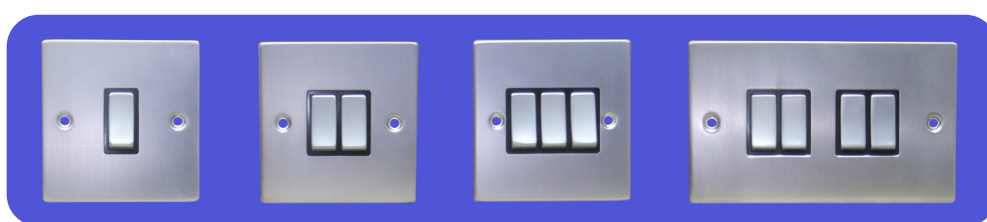


Claddagh Collection

Satin Chrome Round Corner Range

10 Amp Wall Switches Black Inserts

Product Code	Item No	Description	Qty
21402	RA302SCBM	10 Amp 1 Gang 2 Way Switch	10
21403	RA304SCBM	10 Amp 2 Gang 2 Way Switch	10
21404	RA306SCBM	10 Amp 3 Gang 2 Way Switch	10
21405	RA308SCBM	10 Amp 4 Gang 2 Way Switch	10
21406	RA310SCBM	10 Amp 6 Gang 2 Way Switch	10
21407	RA313SCBM	10 Amp Intermediate Switch	10
21408	RA337SCBM	10 Amp 3 Pole Fan Isolator Switch	10

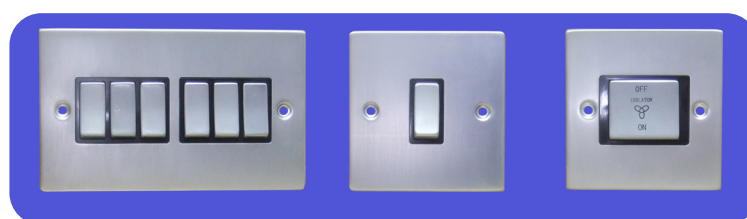


PC: 21402
RS302SCBM

PC: 21403
RS304SCBM

PC: 21404
RS306SCBM

PC: 21405
RS308SCBM



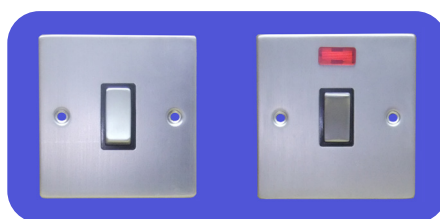
PC: 21406
RS310SCBM

PC: 21407
RS313SCBM

PC: 21408
RS337SCBM

20 Amp DP Switches Black Inserts

Product Code	Item No	Description	Qty
21430	RA325SCBM	20 Amp Double Pole Switch	10
21409	RA324SCBM	20 Amp Double Pole Switch With Neon	10



PC: 21430
RS325SCBM

PC: 21409
RS324SCBM



Claddagh Collection

Satin Chrome Round Corner Range

13 Amp Fused Connection Units Black Inserts

Product Code	Item No	Description	Qty
21435	RA416SCBM	13 Amp Switched Fused Unit	10
21412	RA413SCBM	13 Amp Fused Connection Unit With Neon	10
21436	RA422SCBM	13 Amp Double Pole Switched Fused Connection Unit	10
21413	RA419SCBM	13 Amp Double Pole Switched Fused Unit With Neon	10
21429	RA419FSCBM	13 Amp Fused Switch c/w Flex Outlet & Neon	10



PC: 21435
RA416SCBM

PC: 21412
RA413SCBM

PC: 21436
RA422SCBM

PC: 21413
RA419SCBM

PC: 21429
RA419FSCBM

13 Amp Socket Outlets Black Inserts

Product Code	Item No	Description	Qty
21400	RA409SCBM	13 Amp 1 Gang Double Pole Single Switched Socket	10
21401	RA410SCBM	13 Amp 2 Gang Double Pole Twin Switched Socket	10
21440	RA406/2U2A BK	13 Amp 2 Gang Twin Switched Socket with 2 USB Ports	10
21440/C	RM406/2U2A BK	13 Amp 2 Gang Twin Switched Socket with 1 x A-Port 1 x C-Port	10



PC: 21400
RA409SCBM

PC: 21401
RA410SCBM

PC: 21440
RA406/2U2ABK

PC: 21440/C

45 Amp DP Switches, Cooker Panels Black Inserts

Product Code	Item No	Description	Qty
21410	RA327SCBM	45 Amp Double Pole Small Cooker Switch With Neon	10
21411	RA329SCBM	45 Amp Double Pole Large Cooker Switch with Neon	10



PC: 21410
RA327SCBM



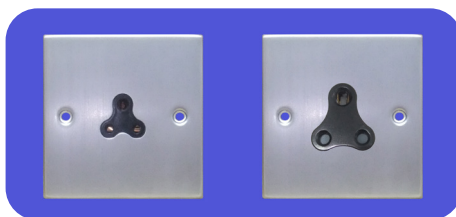
PC: 21411
RA329SCBM



Claddagh Collection Satin Chrome Round Corner Range

5 Amp Socket Outlets & Shaver Socket Black Incerts

Product Code	Item No	Description	Qty
21424	RA455SCBM	2 Amp 1 Gang 3 Round Pin Unswitched Socket	10
21423	RA426SCBM	5 Amp 1 Gang 3 Round Pin Unswitched Socket	10
21442	RA458SCBM	Dual voltage Shaver Socket	1



PC: 21424
RA455SCBM

PC: 21423
RA426SCBM



PC: 21442
RA458SCBM

TV and Satellite Socket Outlets Black Incerts

Product Code	Item No	Description	Qty
21414	RA432SCBM	1 Gang TV/Coaxial Socket Non-Isolated	10
21428	RA433SCBM	2 Gang TV/Coaxial Socket Non-Isolated	10
21415	RA469SCBM	1 Gang Satellite Socket	10
21420	RA469/2SCBM	2 Gang Satellite Socket	10
21427	RA468SCBM	Satellite & TV/Coaxial Socket	10



PC: 21414
RA432SCBM

PC: 21428
RA433SCBM

PC: 21415
RA469SCBM

PC: 21420
RA469/2SCBM

PC: 21427
RA468SCBM

Telephone & Data Socket Outlets Black Incerts

Product Code	Item No	Description	Qty
21416	RA442RJ11 SCBM	1 Gang RJ11 Telephone Socket	10
21417	RA443RJ11 SCBM	2 Gang RJ11 Telephone Socket	10
21425	RA439SCBM	UK 1 Gang Telephone Socket Master	10
21426	RA438SCBM	UK 1 Gang Telephone Socket Secondary	10
21418	RA442RJ45SCBM	1 Gang RJ45 Data Socket	10
21419	RA443RJ45SCBM	2 Gang RJ45 Data Socket	10



PC: 21416
RA442RJ11SCBM

PC: 21417
RA443RJ11SCBM

PC: 21425
RA439SCBM

PC: 21426
RA438SCBM

PC: 21418
RA442RJ45SCBM

PC: 21419
RA443RJ45SCBM



Claddagh Collection

Surface Metal Clad & Rotary Isolators



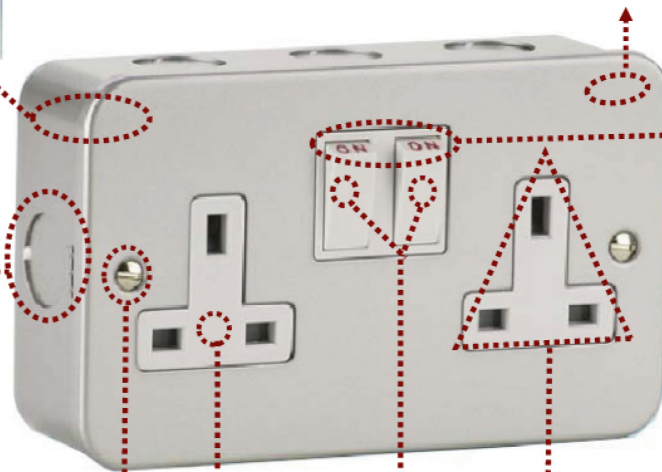
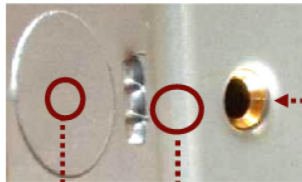
Surface Metal Clad

Integral Earth
Terminal
Capacity:
2x2.5mm²
with Earth



Switch Back Box Knockouts:
1gang with 5 x Ø20mm, 2 on top,
1 in each Remaining sides
2gang with 7 x Ø20mm, 3 on top,
1 in each Remaining sides,
and 2 on the bottom.

Metallic Powder
Paint RAL7040
Finish is corrosion,
and scratch
Resistant



Printing on the
Rockers

Highly Impact
Resistant

Switch Back
Boxes
without
Sockets
available

Specifically
Design
Back Box to
Ensure neat
and exact fit

Supplied with
2 pcs 16mm
Long M35
Fixing screws

Urea
Moulded
Insertion
Plate

Double Pole
Switching,
Center
Rockers

3-Pins "Child Resistant Shutter
System" Designed to inhibit access
to the electricity supply, Unless
All 3 pins of a standard British,
13amp plug are in position!

Range Introduction

The range of metal clad accessories are designed to withstand the Toughest conditions and heaviest knocks particularly in industrial Installations such as factories, workshops, garages and sheds. Made from heavy gauges steel as material and in front plate is Coated with two layers tough paint finish/products are impact resistant will maintain its good looks through years of hard labour.

Features

- ♦ 1.2mm Thickness steel plate as material.
- ♦ Neon versions available.
- ♦ Complete with surface mounting back box.
- ♦ 45A Cooker products are supplied with Deeper Switch box, Box Deep 50mm.
- ♦ Steel Power Coated: RAL7040 Grey Colour.

Dimensions

- ♦ Sizes: One gang 80x80x42mm
Two Gang: 140x80x42mm



Claddagh Collection

Surface Metal Clad

10 Amp Wall Switches

Product Code	Item No	Description	Qty
21206	Y302M	10 Amp 1 Gang 2 Way Switch	5
21207	Y304M	10 Amp 2 Gang 2 Way Switch	5
21208	Y306M	10 Amp 3 Gang 2 Way Switch	5
21209	Y308M	10 Amp 4 Gang 2 Way Switch	5
21210	Y310M	10 Amp 6 Gang 2 Way Switch	5
21250	Y317M	10 Amp 1 Gang Bell Switch	5
21251	Y317M	10 Amp 1 Gang Retrative Switch c/w Box No Ko's	5
21252	Y317-2M	10 Amp 2 Gang Retrative Switch c/w Box No Ko's	5



PC: 21206/Y302M
PC: 21251/Y317M



PC: 21250
Y317M



PC: 21208
Y306M



PC: 21209
Y308M



PC: 21210
Y310M



PC: 21207/Y304M
PC: 21252/Y317-2M

20 Amp DP Switches

Product Code	Item No	Description	Qty
21216	Y325MF	20 Amp Double Pole Switch & Flex Outlet	5
21215	Y324MF	20 Amp Double Pole Switch C/W Flex Outlet & Neon	5



PC: 21216
Y325MF



PC: 21215
Y324MF

13 Amp Fused Connection Units

Product Code	Item No	Description	Qty
21220	Y419MF	13 Amp Switched Fused Spur Unit With Neon & Flex	5
21221	Y416MF	13 Amp Spur & Flex Outlet	5
21222	Y413MF	13 Amp Spur & Neon & Flex Outlet	5
21223	Y422MF	13 Amp Switched Spur & Flex Outlet	5



PC: 21220
Y419MF



PC: 21221
Y416MF



PC: 21222
Y413MF



PC: 21223
Y422MF



Claddagh Collection Surface Metal Clad

13 Amp Socket Outlets

Product Code	Item No	Description	Qty
21200	Y409M	13 Amp 1 Gang Double Pole Single Switched Socket	5
21201	Y410M	13 Amp 2 Gang Double Pole Twin Switched Socket	5
21202	Y403M	13 Amp 1 Gang Unswitched Socket	5
21203	Y404M	13 Amp 2 Gang Unswitched Socket	5



PC: 21200
Y409M



PC: 21201
Y410M



PC: 21202
Y403M



PC: 21203
Y404M

Blank Plates and Switch Boxes

Product Code	Item No	Description	Qty
21227	Y401M	1 Gang 40mm Switch Metal Back Box & Blank Plate c/w 5 x 20mm Ko's	5
21228	Y402M	2 Gang 40mm Switch Metal Back Box & Blank Plate c/w 7 x 20mm Ko's	5



PC: 21227
Y401M



PC: 21228
Y402M

45 Amp DP Switches and Cooker

Product Code	Item No	Description	Qty
21231	Y328M	45 Amp DP Switch	5
21230	Y327M	45 Amp DP Switch with Neon	5
21232	Y330M	Tall 45 Amp DP Switch	5
21233	Y329M	Tall 45 Amp DP Switch with Neon	5



PC: 21231
Y328M



PC: 21230
Y327M



PC: 21232
Y330M



PC: 21233
Y329M



Claddagh Collection Surface Metal Clad

TV and Telephone Sockets

Product Code	Item No	Description	Qty
21241	Y432M	1 Gang TV Socket Non Isolated	5
21242	Y434M	1 Gang TV Socket Isolated	5
21240	Y438M	1 Gang Telephone Socket Secondary UK Version	5
21245	Y439M	1 Gang Telephone Socket Master UK Version	5
21246	Y442M RJ11	1 Gang Telephone Socket Irish Version	5



PC: 21241/Y432M
21242/Y434M



PC: 21240/Y438M
21245/Y439M



PC: 21246
Y442M RJ11

Isolators Switches

Isolator switches play a crucial role in electrical systems by providing a means to safely disconnect circuits and equipment for maintenance, repairs, or during emergencies. These switches are designed to physically isolate a specific part of an electrical system ensuring that no electrical current flows through the disconnected components. Isolator switches are essential for the safety of both personnel and equipment preventing potential hazards such as electric shocks and short circuits. Whether industrial settings, power distribution networks or residential, installations, isolator switches serve as fundamental components in maintaining and managing electrical systems, effectively. Rotary Isolator Enclosure,s. EN: 60947 Certified.

Rotary Isolator Enclosures

Product Code	Description	Qty
20900	20Amp 3P Rotary Isolator Enclosure	1
20901	25Amp 3P Rotary Isolator Enclosure	1
20902	32Amp 3P Rotary Isolator Enclosure	1
20903	40Amp 3P Rotary Isolator Enclosure	1
20904	63Amp 3P Rotary Isolator Enclosure	1





PROGRESS ELECTROPLATING AND MANUFACTURING CO.LTD

LED Lighting



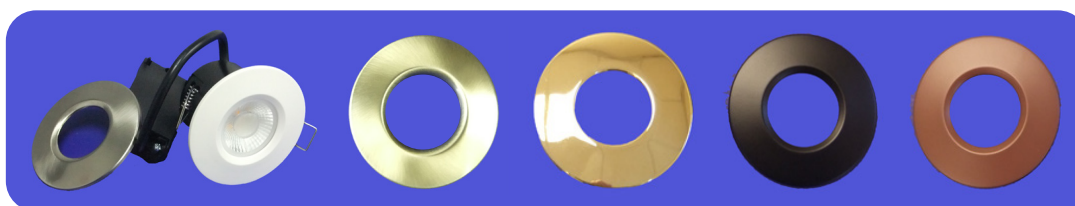
PEMCO offer a wide variety of lighting solutions for indoor and outdoor lighting, Emergency lighting, 110volt Lighting, Fluorescent lamps, CFL's, LED's and many other high quality lighting products. All products comply to the necessary tests and ratings.



LED Lighting

Chameleon LED Downlight

Product Code	Description	Watt	Qty
12405	Chameleon IP65 LED DownLight Fire Rated Dimmable Colour Change c/w Easy Fit Magnetic Satin Chrome Bezel	6watt	48
12402	Chameleon IP65 LED DownLight Fire Rated Dimmable Colour Change	10watt	1
12405/A	Antique Brass Bezel for 6W LED Colour Changer Chameleon		1
12405/B	Brass Bezel for 6W LED Colour Changer Chameleon		1
12405/C	Black Colour Metal Bezel for 6W LED Colour Changer Chameleon		1
12405/D	Brown Colour Metal Bezel for 6W LED Colour Changer Chameleon		1



PC: 12405

PC: 12405/A

PC: 12405/B

PC: 12405/C

PC: 12405/D

PVC LED Downlight Retro Fit Plate's

Product Code	Description	Watt	Qty
12141	5W Tri Colour Changer LED (PVC DownLight Dimmable ww/cw/nw)	5watt	50
12142	Brushed Chrome Bezel for 5W PVC LED Dimmable DownLight Colour Changer		1
12143	Black Bezel for 5W PVC LED Dimmable DownLight Colour Changer		1
24213	Retro Fit Plate for R80 - Convertor 73mm-185mm White		1
24214	Retro Fit Plate for R80-Convertor 73mm-185mm Brushed Chrome		1



PC: 12142

PC: 12143

PC: 12141

PC: 24213

PC: 24214

Twist & Lock Downlights Fixed and Tilt

Product Code	Description	Qty
24200	Twist & Lock Downlight Fixed White (c/w GU10 Lamp Holder & 25cm Cable)	50
24201	Twist & Lock Downlight Fixed Chrome (c/w GU10 Lamp Holder & 25cm Cable)	50
24204	Twist & Lock Downlight Fixed Polished Chrome (c/w GU10 Lamp Holder & 25cm Cable)	50
24202	Twist & Lock Downlight Tilt White (c/w GU10 Lamp Holder & 25cm Cable)	50
24203	Twist & Lock Downlight Tilt Chrome (c/w GU10 Lamp Holder & 25cm Cable)	50
24205	Twist & Lock Downlight Tilt Polished Chrome (c/w GU10 Lamp Holder & 25cm Cable)	50



PC: 24200

PC: 24201

PC: 24204

PC: 24202

PC: 24203

PC: 24205

PEMCO Downlights are manufactured with High Quality Materials.



LED Lighting

IP65 Shower Downlights

Product Code	Description	Qty
24206	IP65 Shower DownLight White (c/w GU10 Lamp Holder & 25cm Cable)	50
24207	IP65 Shower DownLight Satin Chrome (c/w GU10 Lamp Holder & 25cm Cable)	50
24208	IP65 Shower DownLight Polished Chrome (c/w GU10 Lamp Holder & 25cm Cable)	50



PC: 24206

PC: 24207

PC: 24208

PEMCO E-Lux lamps are manufactured to a very high standard with operation voltage 220-240 v 50Hz.
Available in Warm White and Cool White.

LED -SMD BC/B22 & ES/E27 Bulbs and APOLLO GU10 LED

Product Code	Description	Watt	Qty
10936	LED-SMD BC/B22 Lamp Warm White 3000K	10w	10
10945	LED-SMD BC/B22 Lamp Warm White 3000K	8w	10
10946	LED-SMD ES/E27 Lamp Warm White 3000K	10w	10
10947	LED-SMD ES/E27 Lamp Natural White 4100K	10w	10
12105	APOLLO GU10 LED Dimmable Cobb Warm White	5watt	10
12802	Universal Intelligent Dimmer Module for LED Lamps		20



PC 10946

PC 10945

PC 10936



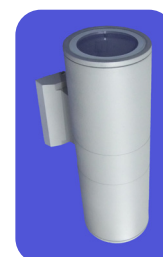
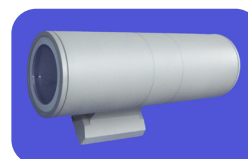
PC 12105



PC: 12802

Fusion Light GU10

Product Code	Description	Colour	Volt	Qty
12655	GU10 IP54 Up & Down Fusion Light 2x APOLLO GU10 5watt LED Dimmable Cobb 50w equivalent (not included)	Sliver	220V	1



LED Ice Pipes

Product Code	Description	Watt
11017	18w E27 LED Ice Pipe 5700K Cool White	18w
11018	18w E27 LED Ice Pipe 4000K Natural White	18w
11019	80w E40 LED Ice Pipe 5700K Cool White	80w



PC 11017

PC: 11018



PC: 11019



LED Lighting

LED Safety Light

Product Code	Description	Voltage	Wattage	Qty
12975/A	LED 5" Safty Light Non Corrosive Fitting IP65 c/w 1m Flex	110V	25watt	6
12976/A	LED 5" Safty Light Non Corrosive Fitting IP65 c/w EmergenCY Pack & 1m Flex	110V	25watt	6



PC: 10975

LED Emergency Maintained Bulkhead

Product Code	Description	Watt/Voltage	Qty
44004	LED Emergency Maintained Bulkhead	110V-240V	1



Festoon LED Kit

Prodcut Code	Description	LED Type	Full Lenght
10909/P	110v LED Powerlite Festoon Kit	20 x 6.5W SMD LED	50 Metres



LED Aqua Blue Fittings

Product Code	Description	Voltage	Wattage	Qty
12977	LED Non Corrosive Fitting - Aqua Blue	110~220V	50watt	8
12978	LED Non Corrosive Fitting c/w EmergencyPack - Aqua Blue	110~220V	50watt	8



PC: 12977

Cobra LED Non Corrosive Fitting

Product Code	Description	Wattage	Qty
10925	Cobra 5" Twin LED Non Corrosive Fitting	50Watt	1
10926	Cobra 5" Twin LED Non Corrosive Fitting (c/w Emergency Pack)	50Watt	1
10971	Microwave Sensor for 50Watt Cobra		1



PC: 10925



PC: 10971



LED Lighting

PEMCO Scorpion Linear IP20 LED Tri-proof Fitting

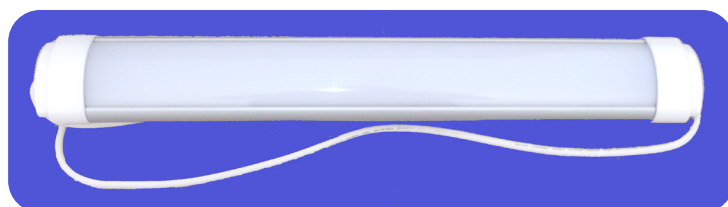
Product Code	Description	Size	Watt
12306	Scorpion Linear IP20 LED Tri-proof Fitting NW (Prewired from the back)	2ft	20watt
12305	Scorpion Linear IP20 LED Tri-proof Fitting NW (Prewired from the back)	4ft	40watt
12304	Scorpion Linear IP20 LED Tri-proof Fitting NW (Prewired from the back)	5ft	60watt



PC: 12306

PEMCO Scorpion Linear IP65 LED Tri-proof Fitting

Product Code	Description	Size	Watt
12303	Scorpion Linear IP65 LED Tri-proof Fitting C/W 2 meter prewired Flex	2ft	20Watt
12302	Scorpion Linear IP65 LED Tri-proof Fitting C/W 2 meter prewired Flex	3ft	30Watt
12301	Scorpion Linear IP65 LED Tri-proof Fitting C/W 2 meter prewired Flex	4ft	40Watt



PC: 12303

Jack Chains and Polished Aluminium Refector

Product Code	Description	Qty
10907	No 10 Jack Chain	10 meter per box
10908	No 8 Jack Chain	10 meter per box
10911	Polished Aluminium Refector	1





LED Lighting

LED Bulkheads

PEMCO Bulkheads are manufactured with High Quality Polycarbonate, for the ones with Polycarbonate Base. Robust design suitable for indoor or outdoor use.

Product Code	Description	Watt/Voltage	Qty
10944	Oval LED IP54 Polycarbonate Bulkhead White 4000K	5watt	1
10944/A	Oval LED IP54 Polycarbonate Bulkhead Black 4000K	5watt	1
10944/B	Oval Eye Lid Cover Black		1
10944/C	Oval Eye Lid Cover White		1



PC: 10944

PC: 10944/A

PC: 10944/B

PC: 10944/C

PEMCO Non Corrosive Fittings are manufactured with ABS Body and Polycarbonate Lens. They have High Frequency Control Gear and Stainless Steel Clips. IP65 rated. They have a hinged gear tray for ease of installation and maintenance. The 220volt has a grey body and the 110volt has a yellow body. Stainless Steel Fittings are IP65 rated, with Switch Start control gear, tempered glass lens, cables are protected by heat resistant sleeving, stainless steel clips, gland and support hooks.

Stainless Steel Fittings IP65

Product Code	Lamp	Voltage	Size: L x W x H(mm)	Wattage	Qty
10918	T8	220 v	2" Stainless Steel IP65 Fitting	2x18 w	1
10921	T8	220 v	5" Stainless Steel IP65 Fitting	2x58 w	1



PC: 10918

PC: 10921

PEMCO Sign lights are manufactured in Bray with High Quality Polycarbonate material for the body and lens, Nylon 66 for the knuckle, Aluminium for the bracket and High Quality control gear. IP 55 rated and suitable for indoor or outdoor use.

Sign lights

Product Code	Description	Watt	Qty
10915	LED Plate c/w Meanwell Driver 4000K	20watt	1
10916	LED Sign Light with Mounting Bracket 4000K	20watt	1
10917	LED Sign Light with 20mm Treaded Knuckle For Mounting with 20mm Steel Conduit 4000K	20watt	1

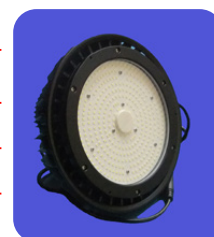


PC: 10916

PEMCO High Bay Fittings are IP65 rated, they come complete with Aluminium Reflector and tempered glass.

LED High Bay Fittings

Product Code	Description	Watt	Qty
10997	UFO LED High Bay Fitting IP65 6500K Dimmable	150watt	1
10998	UFO LED High Bay Fitting IP65 6500K Dimmable	200watt	1
10929	Microwave Sensor suitable for 150/200watt LED High Bay		1



PC: 10931



LED Lighting

PEMCO Circular Club 2D Fittings are Surface mounting fittings with a removable outer ring which is interchangeable. Manufactured with High Quality Polycarbonate and High Frequency Control Gear. 15watt LED Fittings are a retro fit for the, 28watt 2 D Fitting they have 30 x 0.5watt Cool White SMD's. Total Lumen output of 1200LM and are available with Microwave Sensor and/or Emergency Pack with an 80% light output. Standard 15watt supplied with meanwell driver and 5 year warranty.

15 watt Odyssey Led Fittings

Product Code	Description	Watt	Qty
12960	Odyssey Colour Changer LED Circular Fitting c/w Emergency Pack	15watt	1
12958	Odyssey Colour Changer LED Circular Fitting c/w Emergency Pack & Microwave Sensor	15watt	1
12959	Odyssey LED Circular Fitting Cool White	15watt	1
12961	Odyssey Colour Changer LED Gear Tray c/w Emergency Pack	15watt	1

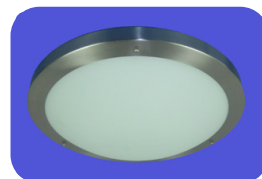


PC: 12959



LED Rivera Fitting

Product Code	Description	Watt	Qty
12981	Rivera LED 400mm Fitting c/w Chrome Ring-Orbit Four 3000k	20W	1



Surface Circular LED Panel

Product Code	Description	Watt	Qty
12906	Surface Circular LED Panel NW 225mm 4100k	18w	1



35watt LED Car Park Fitting

Product Code	Description	Watt	Qty
11030	LED Car Park Fitting	35w	1
11031	LED Car Park Fitting c/w Microwave Sensor	35w	1
11032	LED Car Park Fitting c/w Emergency Pack	35w	1
11033	LED Car Park Fitting c/w Emergency Pack & Microwave Sensor	35w	1
11034	LED Car Park Plate Cool White	35w	1
11035	LED Car Park Plate c/w Microwave Sensor Cool White	35w	1
11036	LED Car Park Plate c/w Emergency Pack	35w	1
11037	LED Car Park Plate c/w Emergency Pack & Microwave Sensor	35w	1



PC: 11030

Stand Alone 3 hour Emergency Pack

Product Code	Description	Qty
12208	Stand Alone 3 hour Emergency Pack	1

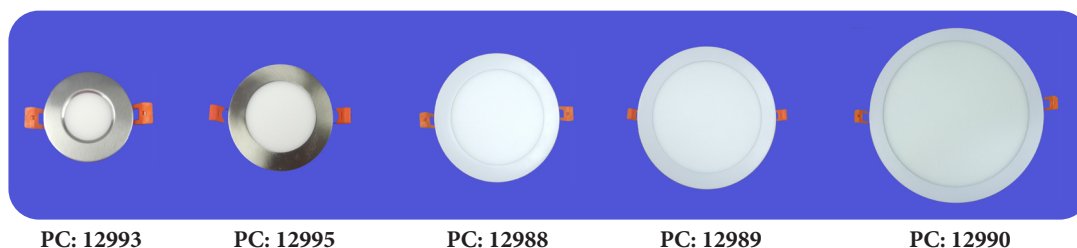




LED Lighting

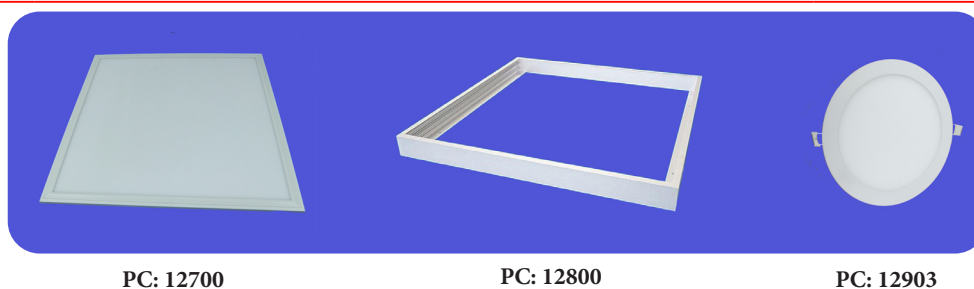
Circular LED Panels

Product Code	Description	Watt
12982	Circular Dimmable LED Panel White Bezel 3000K WarmWhite	5watt
12983	Circular Dimmable LED Panel Brushed Chrome Bezel 4000K Natural White	5watt
12992	Circular Dimmable LED Panel White Bezel 4000K Natural White	5watt
12993	Circular Dimmable LED Panel Brushed Chrome Bezel 3000K Warm White	5watt
12984	Circular Dimmable LED White Panel White Bezel 3000K WarmWhite	9watt
12985	Circular Dimmable LED Panel Brushed Chrome Bezel 4000K Natural White	9watt
12994	Circular Dimmable LED Panel White Bezel 4000K Natural White	9watt
12995	Circular Dimmable LED Panel Brushed Chrome Bezel 3000K Warm White	9watt
12986	Circular Dimmable LED Panel White Bezel 3000K Warm White	12watt
12987	Circular Dimmable LED Panel Brushed Chrome Bezel 4000K Natural White	12watt
12988	Circular Dimmable LED Panel White Bezel 4000K Natural White	12watt
12996	Circular Dimmable LED Panel Brushed Chrome Bezel 3000K Warm White	12watt
12989	Circular Dimmable LED Panel White Bezel 4000K Natural White	18watt
12997	Circular Dimmable LED Panel Brushed Chrome Bezel 4000K Natural White	18watt
12990	Circular Dimmable LED Panel White Bezel 4000K Natural White	24watt
12991	Circular Dimmable LED Panel Brushed Chrome Bezel 4000K Natural White	24watt
12998	Circular Non Dimmable LED Panel White Bezel 4000K Natural White	24watt
12999	Circular Non Dimmable LED Panel Brushed Chrome Bezel 4000K Natural White	24watt



LED Recessed Panels

ProductCode	Description	Size	Watt
12700	LED Recessed Panel Warm White 3000k	595x595	36watt
12701	LED Recessed Panel Cool White 6500k	595x595	36watt
12702	LED Recessed Panel Natural White 4100k	595x595	36watt
12703	LED Recessed Panel Natural White 4100k	295x1195	36watt
12704	LED Recessed Panel Natural White 4100k	595x1195	72watt
12800	Surface Mounting Kit White for Recessed Panels	595x595	
12801	Surface Mounting Kit White for Recessed Panels	595x1195	





New Range of LED Floodlights



PEMCO LED Floodlights

PEMCO Outdoor LED Floodlights are perfect for adding security to commercial and residential areas in particular the outdoor areas of your home or business premises. PEMCO External LED our outside Floodlights are increasingly being installed in these settings as they help intruders stay away from your home or business. Outdoor Floodlighting can also be used to highlight specific objects or signs.

PEMCO LED Floodlights includes PIR LED Floodlights. This option gives an additional level of security as the motion sensor attached to the LED PIR Floodlights the light when it detects movement.

All our LED Floodlights and LED PIR Floodlights are IP65 rated meaning they are fully protected against dust and water. This combined with a long lifespan means there are very few maintenance costs as it will be years before the fittings need the bulb replaced.



LED Floodlights & LED Downlights

Slimline Floodlight PIR Ready

Product Code	Description	Watt	Qty
12500	PEMCO LED Slimline Dual Voltage Floodlight PIR Ready Black	10watt	10
12501	PEMCO LED Slimline Dual Voltage Floodlight PIR Ready Black	20watt	10
12502	PEMCO LED Slimline Dual Voltage Floodlight PIR Ready Black	30watt	8
12503	PEMCO LED Slimline Dual Voltage Floodlight PIR Ready Black	50watt	5
12511	PEMCO LED Slimline Dual Voltage Floodlight PIR Ready White Body	20watt	10
12512	PEMCO LED Slimline Dual Voltage Floodlight PIR Ready White Body	30watt	8
12513	PEMCO LED Slimline Dual Voltage Floodlight PIR Ready White Body	30watt	8
12509	PEMCO LED Slimline Dual Voltage Floodlight PIR Ready Black	100watt	1
12600	PEMCO LED Slimline Dual Voltage Floodlight PIR Ready Black	150watt	1
12510	PEMCO LED Slimline Dual Voltage Floodlight PIR Ready Black	200watt	1



PC:12500

PC:12501

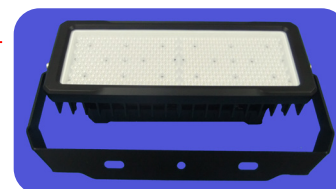
PC:12502

PC:12503

PC:12513

HD 240 watt LED Floodlight

Product Code	Description	Qty
12515	PEMCO HD 240 watt LED Floodlight c/w 1 meter cable	1



Plug & Play PIR Units for LED Floodlights

Product Code	Description	Qty
12601	Plug & Play PIR Unit for LED Floodlights 10watt-150watt Short Arm Black	10
12602	Plug & Play PIR Unit for LED Floodlights 10watt-150watt Short Arm White	10



PIR Motion Detectors

Product Code	Description	Qty
28201	360 Degrees Surface Mounted PIR ST07	1
28202	360 Degrees Recessed PIR ST41	1
28203	180 Degrees Stand Alone PIR ST09 Black	1
28204	180 Degrees Stand Alone PIR ST09 White	1



PC 28201

PC 28202

PC 28203

PC 28204



Notes

[illegible]



Notes

[illegible]

**TERMS AND CONDITIONS OF SALE - Progress Electroplating and Manufacturing Co. Ltd.,**

Prices and Terms are subject to alteration without notice and orders are accepted at prices ruling at time of dispatch.

All prices are subject to the addition of VAT at the prevailing rate.

All products are sold subject to PEMCO Terms and Conditions of Sale as amended from time to time.

Copies of these Terms and Conditions are available on request.

E&OE.

PACK QUANTITIES -The pack sizes within this price list are correct at the time of print.

PEMCO do not supply split packs to Electrical Wholesalers.

COLOURED PRODUCTS - Whilst every endeavour will be made to match the extruded product with the moulded fittings, different processes and materials are utilised which could result in a colour match that might not be exact and therefore cannot be guaranteed. In pursuance of our policy of continued product improvement PEMCO reserve the right to change the design or specification of its products without notification.

Delivery charges apply and may vary.



PEMCO

WWW.PEMCO.IE

Progress Electroplating and Manufacturing Co.Ltd

Unit 3, Harbour Industrial Estate, Bray, Co. Wicklow, Ireland. A98 AV27
Tel: +353 1 2861266. Email: info@pemco.ie Web: www.pemco.ie